

INELS IN PRACTICE



INELS®

INTELLIGENT
ELECTROINSTALLATION





Dear Customer,

You are just browsing through a selection of implemented applications of the Inels system and you might be thinking about using benefits of the Inels system. Either you are planning to build a new house or you are reconstructing your flat, offices, or you would like to use achievements that Inels provides – you can contact our team with trust. We will design, consult, and recommend the best solution and meet all your wishes.

Within quite a short period of 3 years we have experienced over 300 successful installations of the new and advanced system and thousands of satisfied users all over the world. From those applications we have chosen several interesting references for your inspiration. If you are interested, we can arrange your visit in show houses where the system has been installed. On request we can send you a demonstrative animation or you can walk through the virtual Inels house on our web sites www.inels.com.



LIGHTS



HEATING



ALARM
SYSTEM



REMOTE
CONTROL



INTERNET
PC



GSM



BLINDS

Apartment | Nymburk



2

Realization: **Elektro Kutilek expert, November 2008**

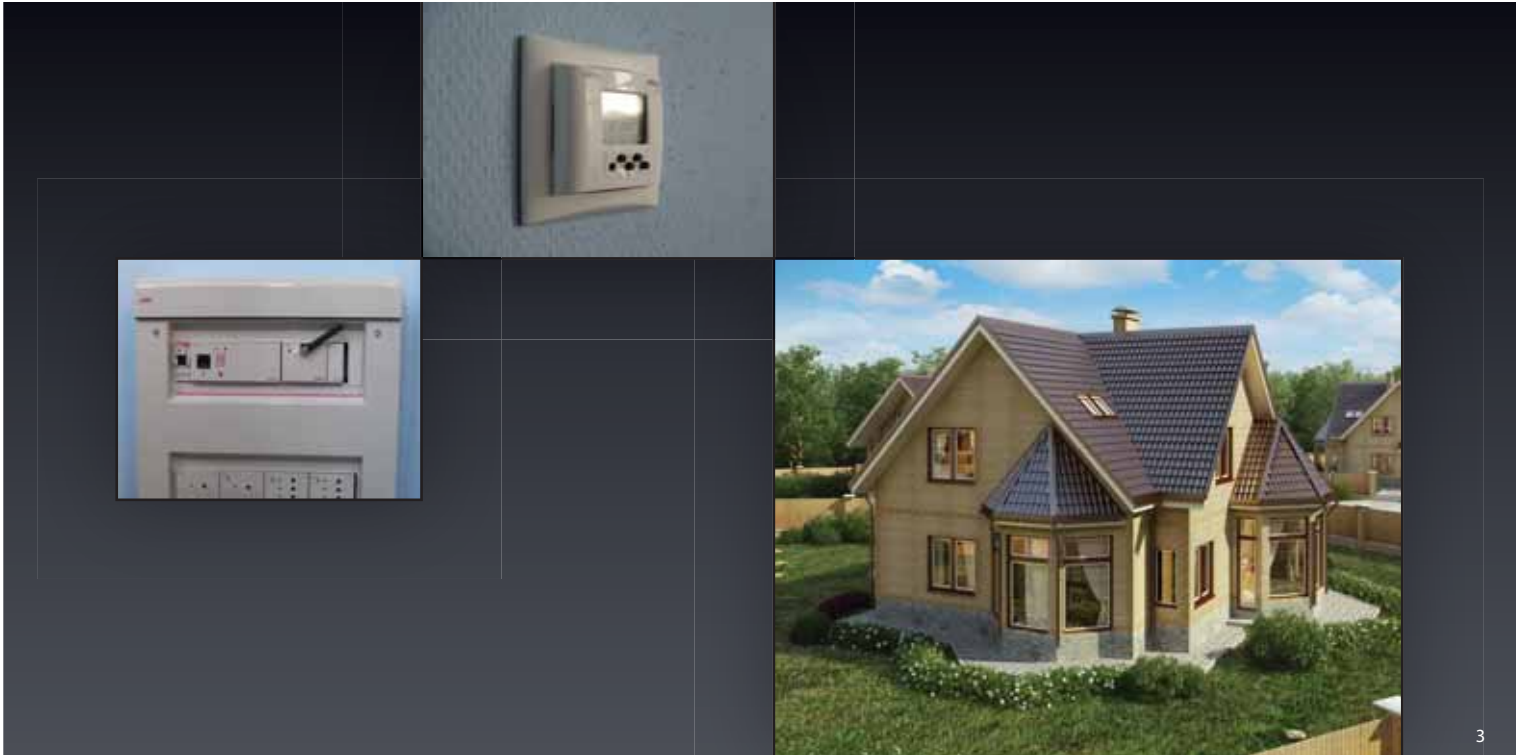
Hardware used: **CU2-01M**

Program equipment: **INELS Designer & Manager**

Control of indoor lights by dimming and switching with system buttons, light scenes, light time programs. Control of outdoor lights. Control of blinds depending on day time and light. Driving units on valves controlling hot water central heating independent in each room. Control of floor heating. Control of correct interaction of fire place and gas boiler. Monitoring of emergency status (water outflow, temperature exceed). Property security. Control via IR, PC and PDA with WIFI. Installation outlets of classical installation (switches, sockets, STA and data) and control units of system installation – Elegant design.

CONTROL	
LIGHTING SWITCHING	●
LIGHTING DIMMING	
SWITCHING OF APPLIANCES	
HEATING	●
AIR CONDITIONING	
SHUTTER / BLINDS	
ALARM SYSTEM	●
OPERATING	
BY PC	●
BY GSM PHONE	●
BY VOICE	
IR CONTROL	●
TOUCH PANEL	

Clever house Vsevolžsk | Russia



3

CONTROL

- LIGHTING SWITCHING ●
- LIGHTING DIMMING ●
- SWITCHING OF APPLIANCES ●
- HEATING ●
- AIR CONDITIONING ●
- SHUTTER / BLINDS ●
- ALARM SYSTEM ●

OPERATING

- BY PC ●
- BY GSM PHONE ●
- BY VOICE ●
- IR CONTROL ●
- TOUCH PANEL ●

Realization: **SIGMA INGENIRING s.r.o.**, March 2009

Hardware used: **CU2-01M**

Program equipment: **INELS Designer & Manager**

Control of interior lights and creating light scenes. Individual control of climate parameters via heating system manager, including floor heating. Installation of digital thermostats INELS in each room. Control by system of air-conditioning. Set up of required temperatures via SMS messages. Exchange of information with security and fire alarm system. Emergency mode when signal from the alarm system received. Monitoring system of electric installation (supply and failure of input power appliance). Monitoring of leakage. Failures monitoring and subsequent sending SMS messages to a selected number. Remote control via the Internet.

Retirement home | Milešov



4

Realization: **AEC Novák s.r.o., December 2008**

Hardware used: **CU2-01M**

Program equipment: **INELS Designer & Manager**

Signal device "NURSE – PATIENT" intended for patients and nursing staff in wards. System is used mainly in hospitals. Flexibility of the system enables its usage in facilities with high demand on non-voice communication. Its can be used also in caring houses.

CONTROL

LIGHTING SWITCHING
LIGHTING DIMMING
SWITCHING OF APPLIANCES
HEATING
AIR CONDITIONING
SHUTTER / BLINDS
ALARM SYSTEM ●

OPERATING

BY PC
BY GSM PHONE
BY VOICE
IR CONTROL
TOUCH PANEL

Culture and communal centre | Holešov



5

CONTROL

LIGHTING SWITCHING ●

LIGHTING DIMMING ●

SWITCHING OF APPLIANCES

HEATING

AIR CONDITIONING

SHUTTER / BLINDS

ALARM SYSTEM

OPERATING

BY PC

BY GSM PHONE

BY VOICE

IR CONTROL

TOUCH PANEL ●

Realization: **ELSPET s.r.o., December 2008**

Hardware used: **CU2-01M**

Program equipment: **INELS Designer & Manager**

Control of indoor lights by dimming and switching with system buttons, light scenes of Big halls and surrounding corridors. For central control and visualization there are two TOUCH 51/PCB pannels mounted. Links to electric fire alarm.

French restaurant, Council house | Praha



6

Realization: **GOOLST s.r.o., September 2008**

Hardware used: **CU2-01M**

Program equipment: **INELS Designer & Manager,
1x Reliance 4 Runtime Control 50db**

Control of interior lights by switching and dimming, creating light scenes. For central control and visualization there are two TOUCH 51/PCB panels with Reliance 4 Runtime Control 50db installed. Project done by partner company TEVA elektro, s.r.o.

CONTROL

LIGHTING SWITCHING ●

LIGHTING DIMMING ●

SWITCHING OF APPLIANCES

HEATING

AIR CONDITIONING

SHUTTER / BLINDS

ALARM SYSTEM

OPERATING

BY PC

BY GSM PHONE

BY VOICE

IR CONTROL

TOUCH PANEL ●

Secondary chemical school | Brno



7

CONTROL

LIGHTING SWITCHING ●

LIGHTING DIMMING ●

SWITCHING OF APPLIANCES ●

HEATING

AIR CONDITIONING

SHUTTER / BLINDS

ALARM SYSTEM ●

OPERATING

BY PC

BY GSM PHONE

BY VOICE

IR CONTROL

TOUCH PANEL ●

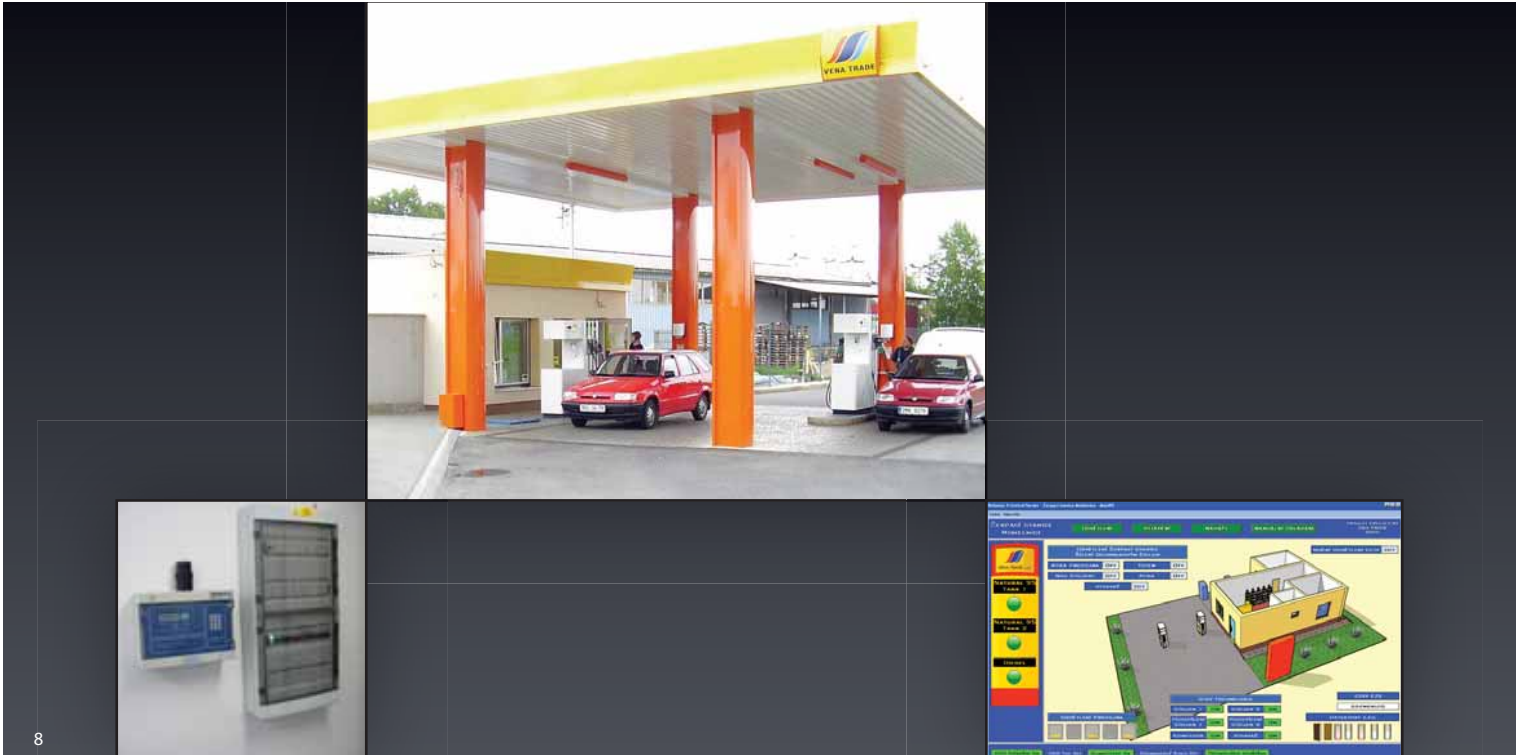
Realization: **Activhouse cz s.r.o., August 2008**

Hardware used: **CU2-01M**

Program equipment: **INELS Designer & Manager**

Complex control of indoor lights in the property, control of hot water through-flow boiler and hot water container through time programs. Special mode for lights in a gym, cloak room, exerciser room, small hall, and cleaning room, locally via 0/1 buttons connected to the system and via time program, sockets control and gym technology (air-conditioning, power supply in pissoirs, ventilation of WC) via time program. Link to external alarm security system – events programmed for activation/deactivation of the alarm system. At the reception there is a TOUCH 51/PCB panel for visualization and central control of the system.

Petrol station | Mohelnice



8

Realization: **Pavel Bednář, August 2008**

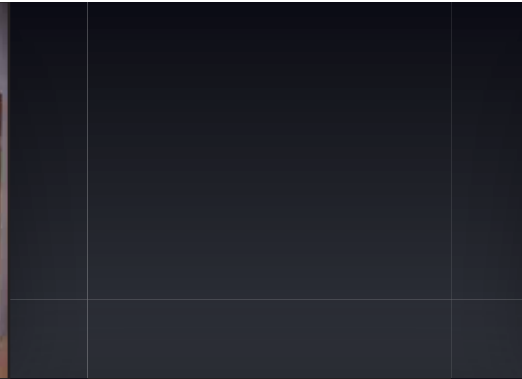
Hardware used: **CU2-01M**

Program equipment: **INELS Designer & Manager, 1x Reliance Runtime 4 Control Server 200 db, 1x Reliance 4 Web Client**

Outdoor lights control CCTV, control of indoor lights and connection to the security system. Control of heating and air-conditioning in individual rooms (irc), blocking of heating and air-conditioning when a door is opened. Control of the station technology (petrol stands, vacuum cleaner, compressor). Monitoring of tank level by DINEL converter – reports of levels and emergency. Possibility of switch over to manual operation – disconnection from automatic control. Remote access, status transfer via GSM module to mobile phone of the maintenance. For monitoring is used Reliance 4 Runtime Control Server and Reliance 4 Web Client.

CONTROL

- LIGHTING SWITCHING ●
- LIGHTING DIMMING ●
- SWITCHING OF APPLIANCES ●
- HEATING ●
- AIR CONDITIONING ●
- SHUTTER / BLINDS ●
- ALARM SYSTEM ●
- OPERATING**
- BY PC ●
- BY GSM PHONE ●
- BY VOICE ●
- IR CONTROL ●
- TOUCH PANEL ●



CONTROL

- LIGHTING SWITCHING ●
- LIGHTING DIMMING ●
- SWITCHING OF APPLIANCES
- HEATING
- AIR CONDITIONING
- SHUTTER / BLINDS ●
- ALARM SYSTEM ●

OPERATING

- BY PC ●
- BY GSM PHONE ●
- BY VOICE
- IR CONTROL
- TOUCH PANEL

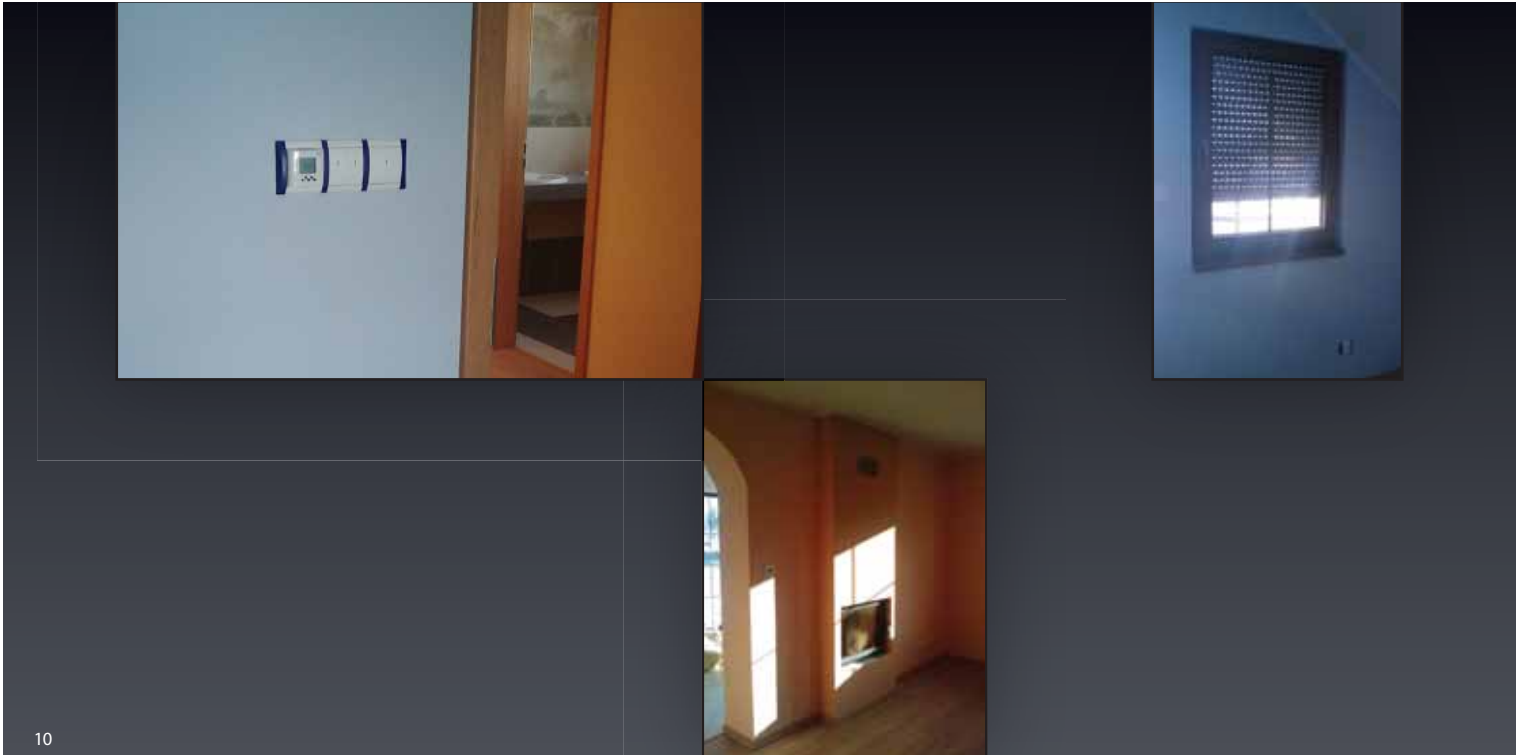
Realization: **Aleš Koubek, July 2008**

Hardware used: **CU2-01M**

Program equipment: **INELS Designer & Manager**

Complex control of indoor and outdoor lights, control of indoor blinds. Monitoring status of surge protection, current protection, high and low tariff of electric energy. Alarm and fire security system is integrated – motion detectors, smoke detectors, door and window contacts, keypad, card reader. Ready for watering system, Venetian blinds, camera system, audio distribution in the house. Classical installation outlets (sockets, switches, STA, data) - design Elegant. Modular and protection devices ELKO EP s.r.o.

House | Vlašim



Realization: **D-mansion s.r.o., December 2008**

Hardware used: **CU2-01M**

Program equipment: **INELS Designer & Manager**

Control of electric floor heating, central and local temperature set up in rooms, switching of lights, dimming of lights, time function, holiday mode, alarm system, 1 Gb ethernet, audio/video distribution, STA, control via web interface, GSM and remote control, remote management. Installation outlets for classical installation (switches, sockets, STA and data) and control units of system installation - design Elegant. Modular and protection devices ELKO EP s.r.o.

CONTROL

LIGHTING SWITCHING ●

LIGHTING DIMMING ●

SWITCHING OF APPLIANCES ●

HEATING ●

AIR CONDITIONING

SHUTTER / BLINDS

ALARM SYSTEM ●

OPERATING

BY PC

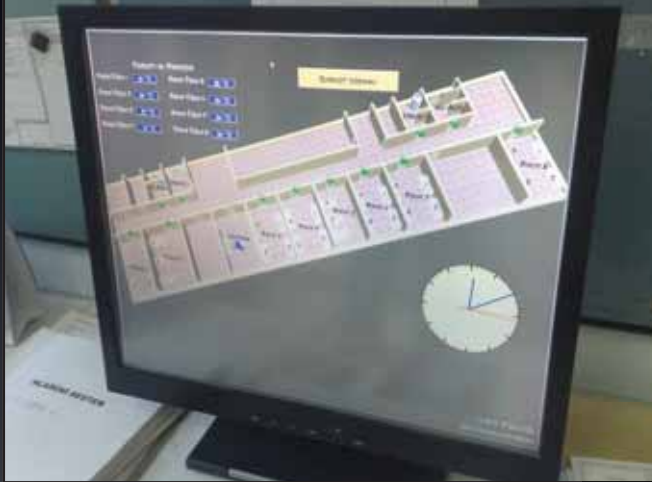
BY GSM PHONE ●

BY VOICE

IR CONTROL ●

TOUCH PANEL

Physiotherapy ward | Hospital Teplice



11

CONTROL

LIGHTING SWITCHING
LIGHTING DIMMING
SWITCHING OF APPLIANCES
HEATING
AIR CONDITIONING
SHUTTER / BLINDS
ALARM SYSTEM ●

OPERATING

BY PC ●
BY GSM PHONE
BY VOICE
IR CONTROL
TOUCH PANEL

Realization: **AEC Novák s.r.o., January 2009**

Hardware used: **CU2-01M**

Program equipment: **INELS Designer & Manager,
1x Reliance Runtime Control 100 db**

Signal device "NURSE – PATIENT" intended for patients and nursing staff in wards. System is used mainly in hospitals, baths. Central unit of the system is connected with controlling computer equipped with touch 19" LCD monitor. Well-arranged and archiving defined data is provided by SCADA/HMI system Reliance 4, which in connection with IDM software manages alarm reports and sends them to individual rooms, staff can monitor it on touch LCD monitor. Temperatures from different rooms are also visualized. Each report is accompanied by acoustic and visual signal.

AVEX BAUMARKT | Valašské Meziříčí



12

Realization: **Ing. Karel Bílek, February 2009**

Hardware used: **Tecomat Foxtrot CP-1005**

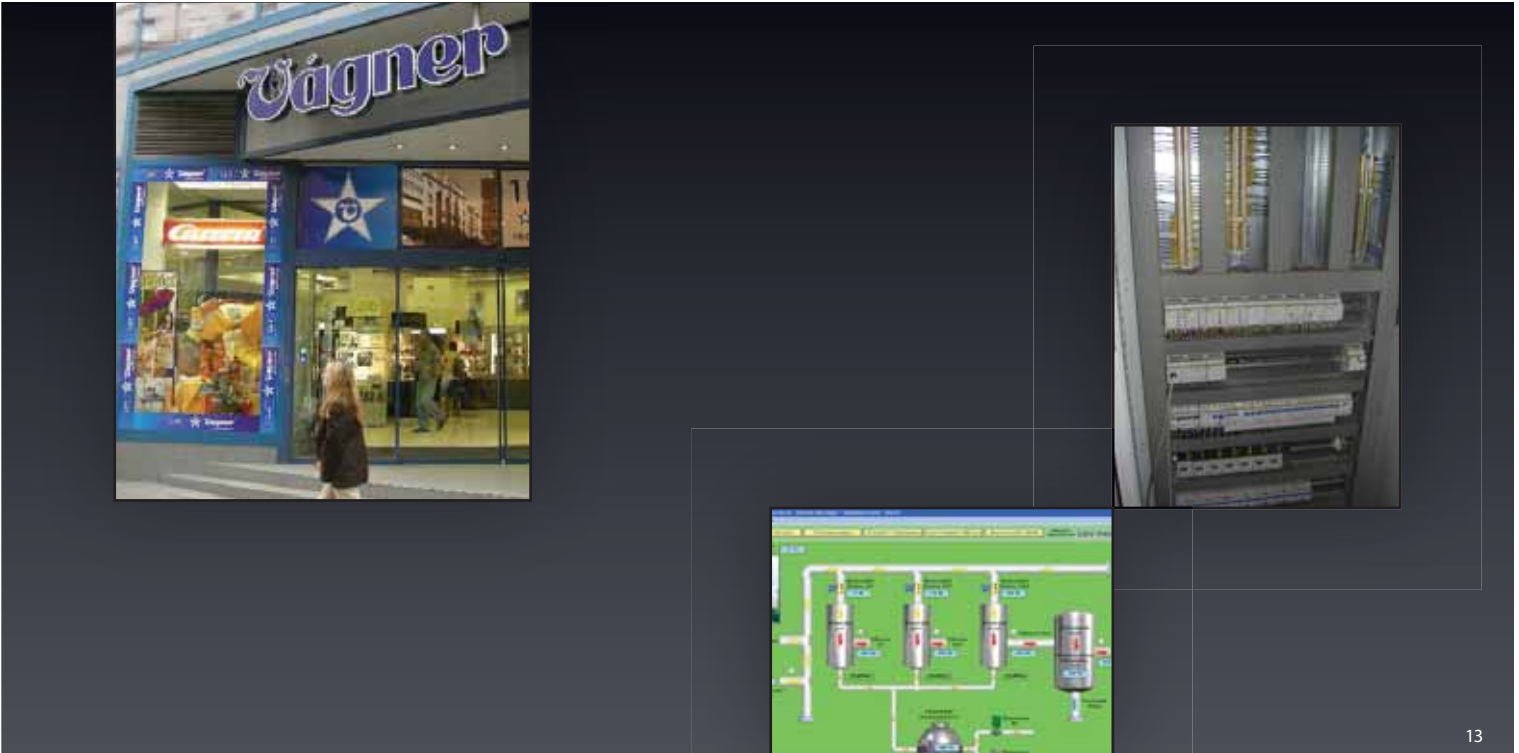
Program equipment: **integrated development environment
Mosaic, 1x Reliance 4 Runtime Control 500 db**

Complex control of the object AVEX BAUMARKT and technologies integration to BMS system (building management system):

- control of steam junction exchange with capacity 1.4 GW
- heating, cooling, recuperation technology
- lights control depending on outdoor light intensity
- integration of approved security central with access and attendance system to the central unit

- links to electric fire signal
- control of door locks and bars
- telephone central with IP telefonie support
- camera system CCTV
- control and transmission of emergency reports via GSM communicator
- remote supervision via the Internet
- control and monitoring via control system - SCADA/HMI system Reliance 4

Department store Váagner | Brno



13

Realization: **Activhouse cz s.r.o., December 2008**

Hardware used: **Tecomat Foxtrot CP-1005**

Program equipment: **integrated development environment Mosaic, 1x Reliance 4 Runtime, Control Server 100 db, 1x Reliance 4 Web Client**

Control of technology of steam junction exchange station.

Steam valves of central heating, air conditioning, and hot water:

- water heating in circuits of central heating, air-conditioning, and hot water including its container

- pressure control in circuits of central heating, air-conditioning, and hot water
- water refilling to the circuits
- control of level and pressure of capacitor tank
- local control via operator board ID-14
- remote supervision via the Internet
- transfer of emergency reports via GSM communicator

Timbered cottage | Černý Důl



14

Realization: **Elvia spol. s r.o., June 2008**

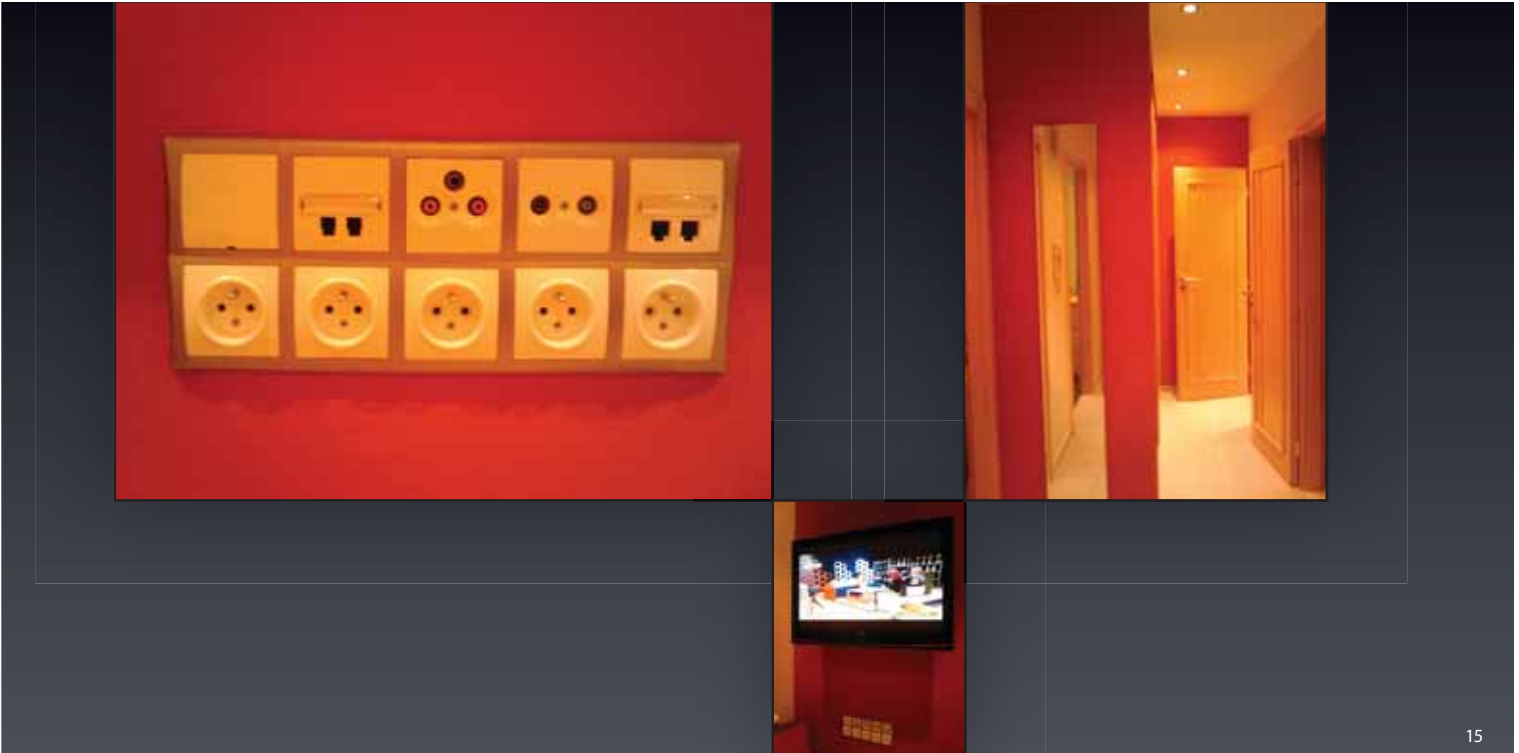
Hardware used: **CU1-01M**

Program equipment: **INELS Designer & Manager**

Control of indoor lights, Venetian blinds, hot-water central heating. The system switches over between gas boiler of the central heating and fire place. Ventilation in the whole house is provided by recuperation unit Atria that is linked to heating and cooling controlled by Inels. The system carries out monitoring of emergency status. In the house there is interaction with AV appliances. Voice control via Sophy unit, including IR control.

CONTROL	
LIGHTING SWITCHING	●
LIGHTING DIMMING	●
SWITCHING OF APPLIANCES	●
HEATING	●
AIR CONDITIONING	
SHUTTER / BLINDS	●
ALARM SYSTEM	●
OPERATING	
BY PC	●
BY GSM PHONE	●
BY VOICE	●
IR CONTROL	●
TOUCH PANEL	

Apartment | Praha



15

CONTROL

- LIGHTING SWITCHING ●
- LIGHTING DIMMING ●
- SWITCHING OF APPLIANCES ●
- HEATING ●
- AIR CONDITIONING ●
- SHUTTER / BLINDS ●
- ALARM SYSTEM ●

OPERATING

- BY PC ●
- BY GSM PHONE ●
- BY VOICE ●
- IR CONTROL ●
- TOUCH PANEL ●

Realization: **D-mansion s.r.o., May 2008**

Hardware used: **CU2-01M**

Program equipment: **INELS Designer, INELS Manager**

Control of some radiators, central and local temperature set up, switching of lights, lights ramp up/down, time functions, vacation mode, alarm system, 1 Gb ethernet, audio/video distribution, STA, control via PDA (web), GSM and remote control, remote management. Classic installation outlets (sockets, switches, STA and data) - design Elegant.

Office building | Chomutov



16

Realization: **Václav Šedivý, December 2008**

Hardware used: **CU2-01M**

Program equipment: **INELS Designer & Manager**

Control of heating and air-conditioning (ventilation). Offices are heated with heating panels switched by switching actors SA2-01B with temperature sensor under the plaster. In different rooms time program changes day operation temperature with night temperature decline. Above that, you can reach comfort temperature by buttons. In bathroom there is ventilation of humidity with respect to time, humidity and temperature in the room. In the bathroom there is also regulation of hot water according to time program. In the dressing room there is similar solution with respect to time and temperature in the room.

CONTROL

LIGHTING SWITCHING

LIGHTING DIMMING

SWITCHING OF APPLIANCES

HEATING



AIR CONDITIONING



SHUTTER / BLINDS

ALARM SYSTEM

OPERATING

BY PC



BY GSM PHONE

BY VOICE

IR CONTROL

TOUCH PANEL

House | Chuderov



17

CONTROL

LIGHTING SWITCHING ●

LIGHTING DIMMING ●

SWITCHING OF APPLIANCES ●

HEATING ●

AIR CONDITIONING ●

SHUTTER / BLINDS ●

ALARM SYSTEM ●

OPERATING

BY PC ●

BY GSM PHONE ●

BY VOICE ●

IR CONTROL ●

TOUCH PANEL ●

Realization: **AEC Novák s.r.o., August 2007**

Hardware used: **2x CU-01M**

Program equipment: **INELS Designer, INELS Manager**

Connection of two central units via tcp/ip, lights control, air-conditioning control, heating regulation in individual rooms including floor heating (irc), blinds control, switches 230 V, STA and data - design Elegant, garden control - lights + watering.

House | Milotice



18

Realization: **Václav Štěrba, February 2009**

Hardware used: **CU2-01M**

Program equipment: **INELS Designer & Manager**

Light scenes controlled by a user via bus controllers and IR remote controller, light scenes controlled automatically. Control of the heating system for all rooms independently according to users' program and security system status, remote control of the heating system of selected rooms and sauna via SMS, integrated alarm system with GSM module support, SMS for the system monitoring. Blinds control, pool roofing according to weather, maintenance of entrance roads when snowing and icy, air-conditioning, and events manager. Remote access via web server.

CONTROL

LIGHTING SWITCHING ●

LIGHTING DIMMING ●

SWITCHING OF APPLIANCES ●

HEATING ●

AIR CONDITIONING ●

SHUTTER / BLINDS ●

ALARM SYSTEM ●

OPERATING

BY PC ●

BY GSM PHONE ●

BY VOICE ●

IR CONTROL ●

TOUCH PANEL ●

House | Piešťany – Slovakia



19

CONTROL

- LIGHTING SWITCHING ●
- LIGHTING DIMMING ●
- SWITCHING OF APPLIANCES ●
- HEATING ●

AIR CONDITIONING

- SHUTTER / BLINDS ●
- ALARM SYSTEM ●

OPERATING

- BY PC ●
- BY GSM PHONE ●
- BY VOICE ●
- IR CONTROL ●
- TOUCH PANEL ●

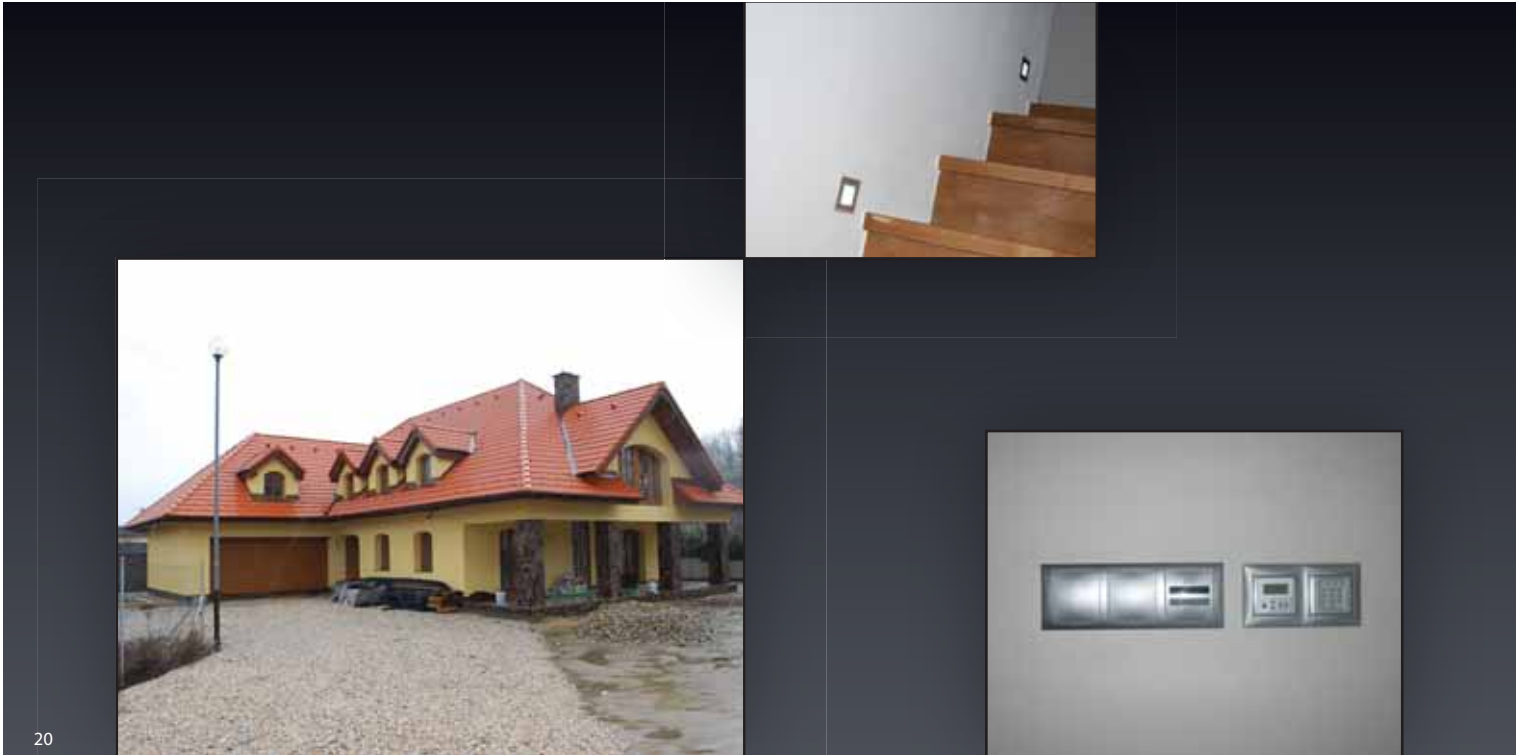
Realization: **Valo Radovan – VES, November 2008**

Hardware used: **CU2-01M**

Program equipment: **INELS Designer & Manager**

Complex control of lights and lights scenes, Venetian blinds – heating link. Monitoring of house intrusion and failure status. Simulation of persons presence during long-term absence of the owner. Appliances control via IR controller. Remote access via the Internet and GSM.

House | Bratislava – Slovakia



Realization: **A-Z Instal, s.r.o., February 2009**

Hardware used: **CU2-01M**

Program equipment: **INELS Designer & Manager**

Control of indoor lights by system buttons - dimming and switching, light scenes, zone heating regulation. Control of pool technology, garden watering, time function, voice and IR control, video gatekeeper and camera system. Alarm system integrated – motion detectors, keypad with card reader. Remote access via the Internet and GSM.

CONTROL

LIGHTING SWITCHING	●
LIGHTING DIMMING	●
SWITCHING OF APPLIANCES	●
HEATING	●
AIR CONDITIONING	
SHUTTER / BLINDS	●
ALARM SYSTEM	●

OPERATING

BY PC	●
BY GSM PHONE	●
BY VOICE	●
IR CONTROL	●
TOUCH PANEL	

House | Kaunas – Lithuania



21

CONTROL

LIGHTING SWITCHING ●

LIGHTING DIMMING

SWITCHING OF APPLIANCES

HEATING ●

AIR CONDITIONING

SHUTTER / BLINDS

ALARM SYSTEM

OPERATING

BY PC ●

BY GSM PHONE ●

BY VOICE

IR CONTROL

TOUCH PANEL

Realization: **INFOTESA UAB, September 2008**

Hardware used: **CU2-01M**

Program equipment: **INELS Designer, INELS Manager**

Control of floor heating, independently in each room. Heating control in all rooms via remote board. The system is connected with AMX system. Monitoring of emergency status such as failure of heating using diesel boiler, unplanned temperature decrease or increase, power supply failure and SMS report to a specified number. Remote access, communication and control of the system by user via GSM module to the mobile phone, including confirmation of performed messages as SMS.

Clever house | Vilnius – Lithuania



22

Realization: **INFOTESA UAB, August 2008**

Hardware used: **CU2-01M**

Program equipment: **INELS Designer & Manager**

Complex control by wall buttons (switching, dimming, scenes) in the main house, steam bath, garrage, and in the street by universal remote board and SOPHY module. Control of air-conditioning in the whole house. Alarm system integrated (motion detectors) which automatically switches on/off outdoor lights and sends short SMS to an owner's mobile phone. Remote access via the Internet.

CONTROL

LIGHTING SWITCHING ●

LIGHTING DIMMING ●

SWITCHING OF APPLIANCES ●

HEATING ●

AIR CONDITIONING ●

SHUTTER / BLINDS ●

ALARM SYSTEM ●

OPERATING

BY PC ●

BY GSM PHONE ●

BY VOICE ●

IR CONTROL ●

TOUCH PANEL ●

Luxurious apartment | Vilnius – Lithuania



23

CONTROL

LIGHTING SWITCHING ●

LIGHTING DIMMING ●

SWITCHING OF APPLIANCES ●

HEATING ●

AIR CONDITIONING ●

SHUTTER / BLINDS ●

ALARM SYSTEM ●

OPERATING

BY PC ●

BY GSM PHONE ●

BY VOICE ●

IR CONTROL ●

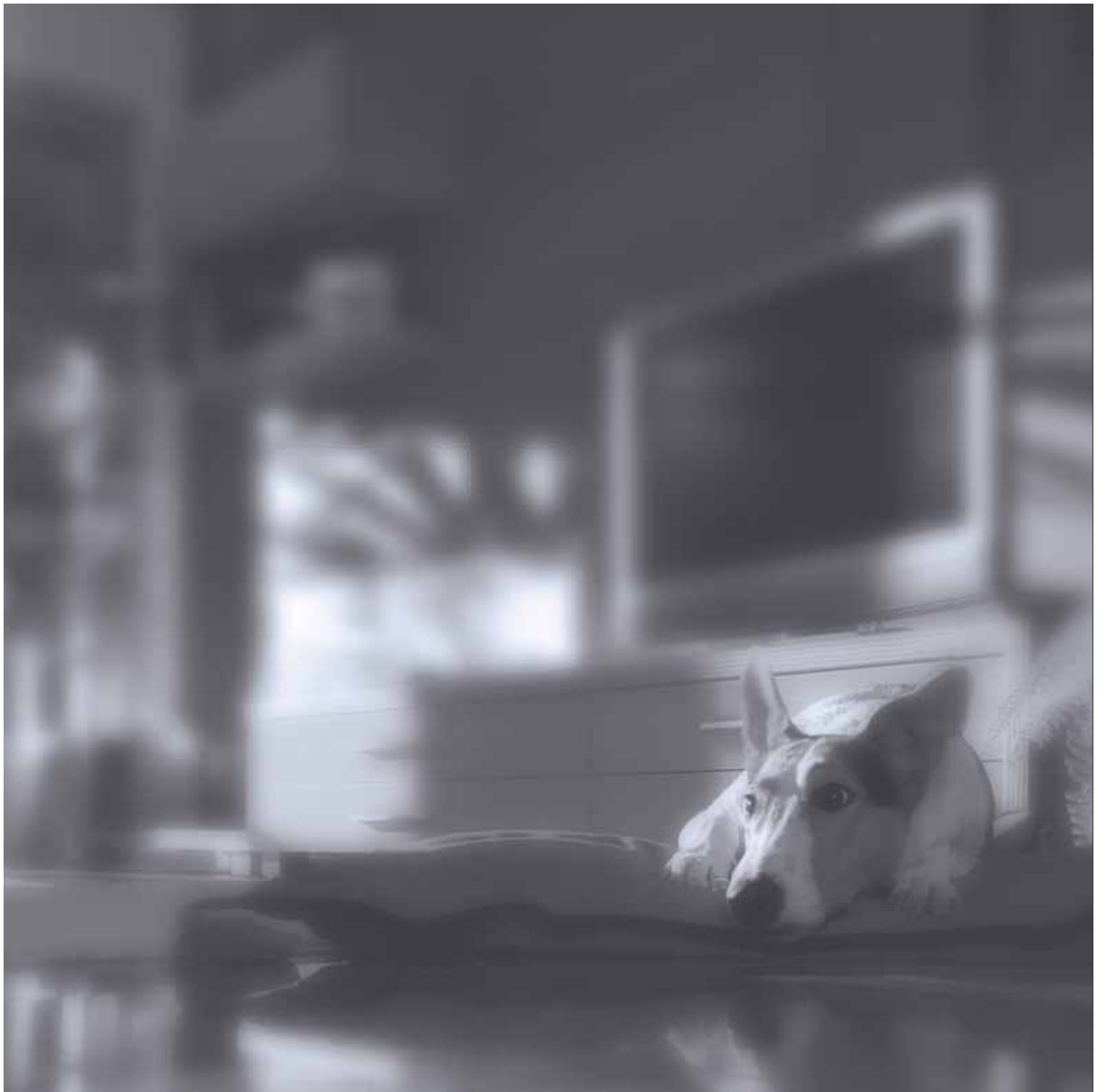
TOUCH PANEL ●

Realization: **SP Mikronas, June 2008**

Hardware used: **CU2-01M**

Program equipment: **INELS Designer, INELS Manager**

Lights control, light intensity regulation, control of sockets, blinds, and light stages. Regulation of hot water floor heating independently in each room. Safety signalling with signal to the central safety board. Controlled by keypad, GSM, proxy cards, IR and also remote control and control by the INELS Manager via the Internet.





www.inels.com



ELKO EP, s.r.o. Palackého 493 | 769 01 Holešov – Všetuly | Czech Republic | Tel. +420 573 514 211 | Fax +420 573 514 227 | info@inels.com

II. Publication