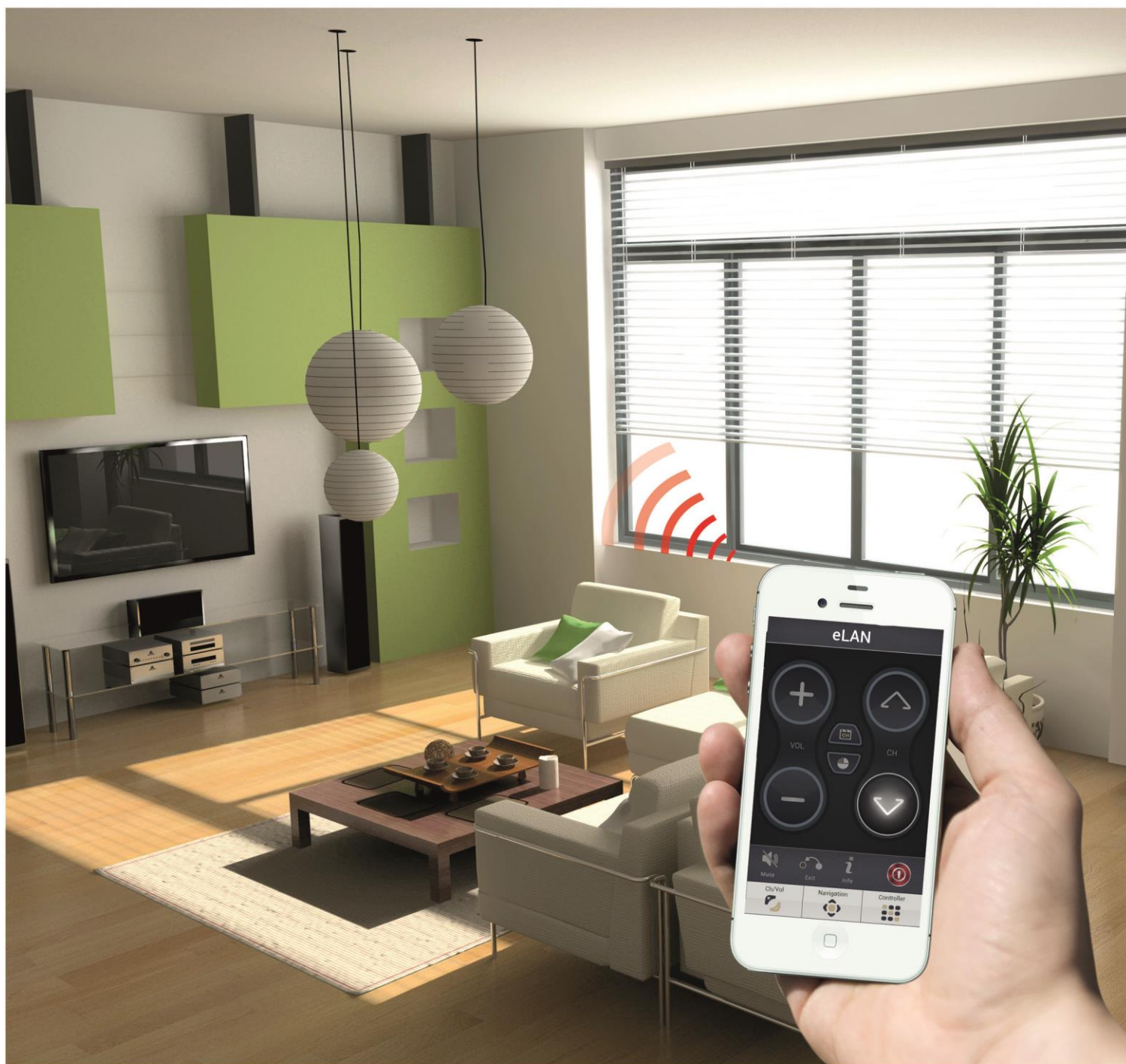



# INSTALLATION MANUAL

for the Application iHC-MIIR



 App Store  
[www.elkoep.com/apps](http://www.elkoep.com/apps)

**iNELS**

**Contents**

- 1. Introduction.....3
- 2. Installing the application into a mobile phone with iOS.....3
- 3. Settings and control.....4
  - 3.1 Adding a Smart IR box eLAN-IR into the application.....5
  - 3.2 Adding a device .....7
  - 3.3 Device configuration .....8
  - 3.4 Setting Scenes.....10
- 4. Control .....11

## 1. Introduction

Application iHC-MAIR - universal controller for all Audio Video appliances (as well as HVAC)

Anybody can navigate the simple, intuitive environment of the Application iHC-MAIR (the "application") for controlling.

The application is connected via smart phone to the Smart IR box, which communicates with A/V appliances using an IR code. It can control up to 100 arbitrary commands from various controllers that you normally have at home. It can integrate an unlimited number of IR boxes into this one application. You can connect 3 sensors for three directions of control to each IR box.

The menu is divided into clearly structured sections in which the icons indicate individual functions. The application includes a Light Scenes function, where you perform multiple actions with a single command.

Thanks to iHC-MAIR – you can perfectly control the function of your appliances and devices (e.g. home theater, TV, DVD player, Blue Ray player, amplifier, setup box, satellite receiver, air conditioning, etc.).

The application only works with the unit Smart IR box eLAN RF-003.

It is designed for devices with iOS 7.1.2 and higher.

- Optimized for devices with a display resolution of 800x480.
- The application language follows the language set in the iOS.

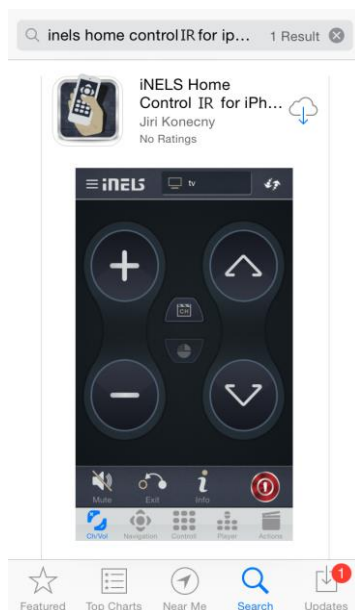
It also enables control for multiple users at once.

### Downloading

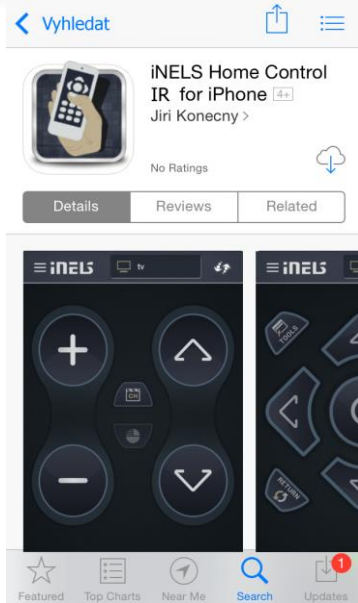
Download the current version at the **App Store** (under the name iHC-MIIR).

## 2. Installing the application into a mobile phone with iOS

Installing the application into a mobile phone with iOS via the service **App Store**.



- a) Connect to the Internet using your mobile phone.
- b) Activate the service **App Store**.
- c) In the search bar, enter the password **iNELS** and press Search.
- d) In the list, select the application **iNELS Home Control IR for iPhone** and open the dialog box with information on the application.

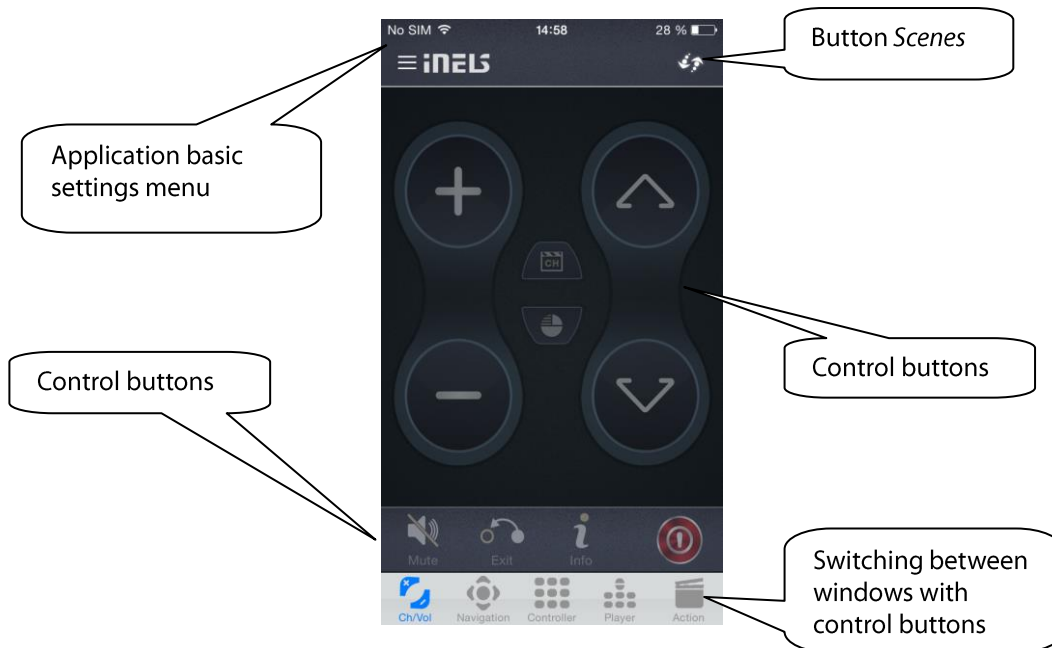


- e) Press *INSTALL(GAPP)*.
- f) After installing the application into the telephone, instead of the button *Install*, the button *Open* will appear.

### 3. Settings and control

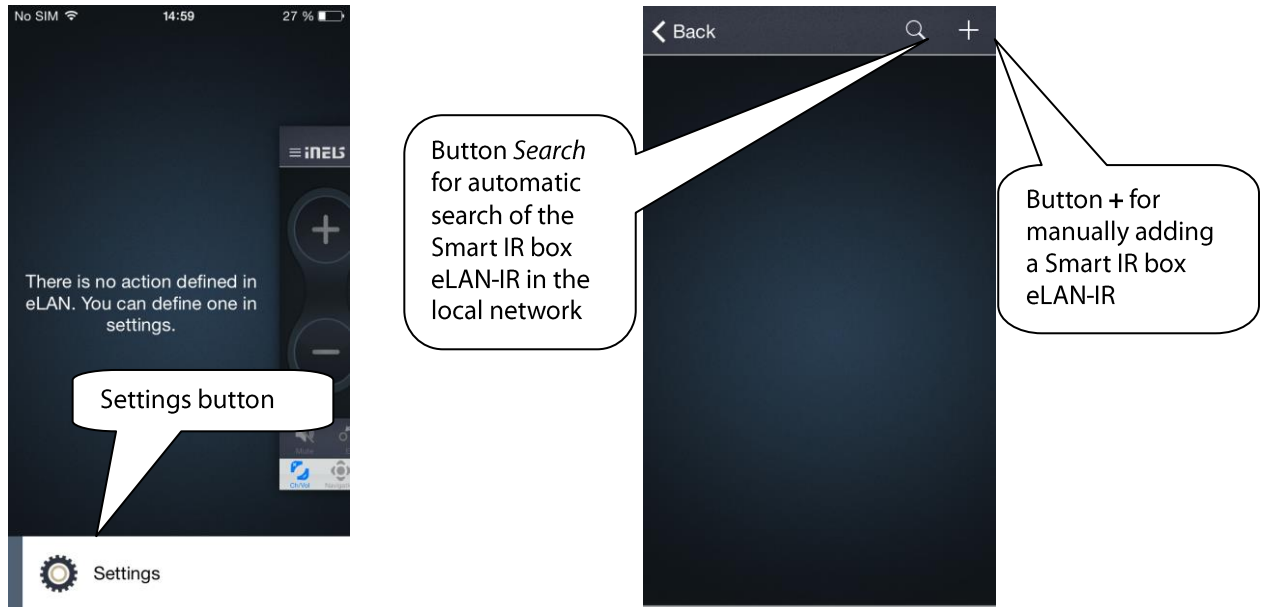
The application must first be configured in order to offer everything required immediately on the basic desktop.

Initial display upon running the application.



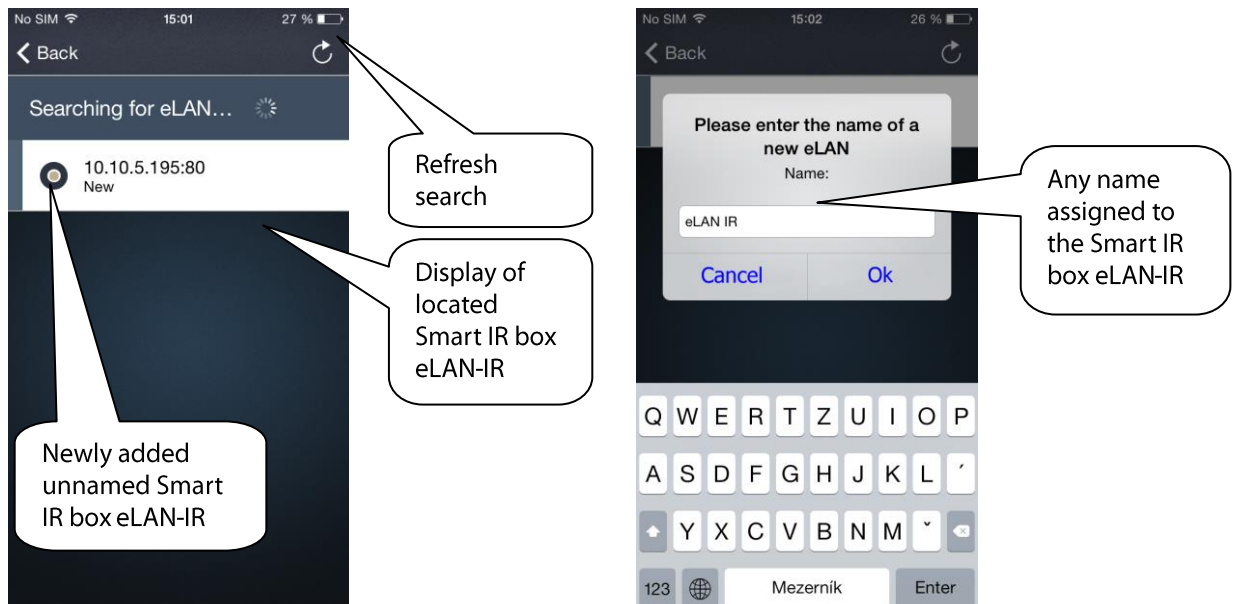
### 3.1 Adding a Smart IR box eLAN-IR into the application

Open the basic settings menu of the application by pressing *iNELS* in the upper left corner (you can also display the menu by swiping from the left edge of the main control screen).



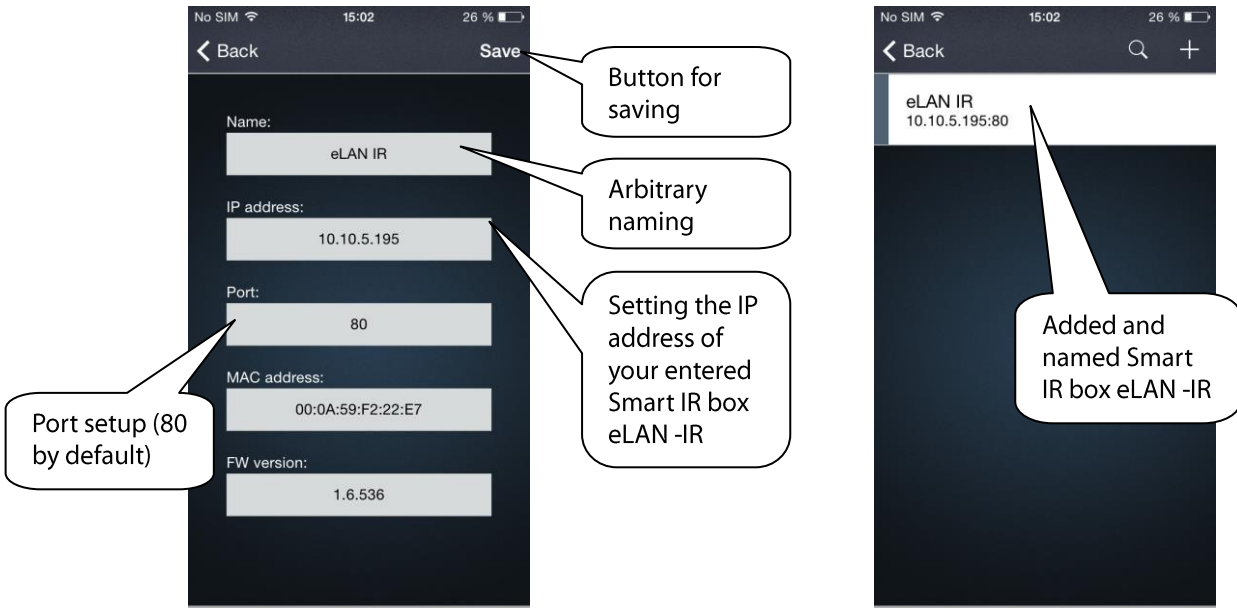
- Automatically:

By pressing *Search*, you will locate the required Smart IR box eLAN-IR (eLANs) in your home network. You can give it any name.



- Manually:

After pressing +, add the name and IP address of your smart IR box eLAN-IR.



Once you name your Smart IR box eLAN-IR, you can store devices in it that you want to control via the application. By pressing the named eLAN-IR, you will open the menu:

- Detail of eLAN – for editing the name or IP address.
- Devices – adding or editing already added devices.
- Light scenes - creating light scenes.

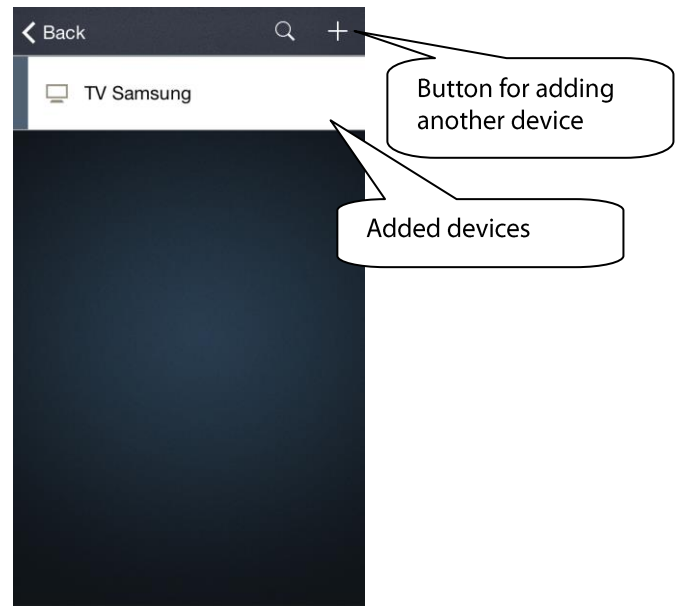
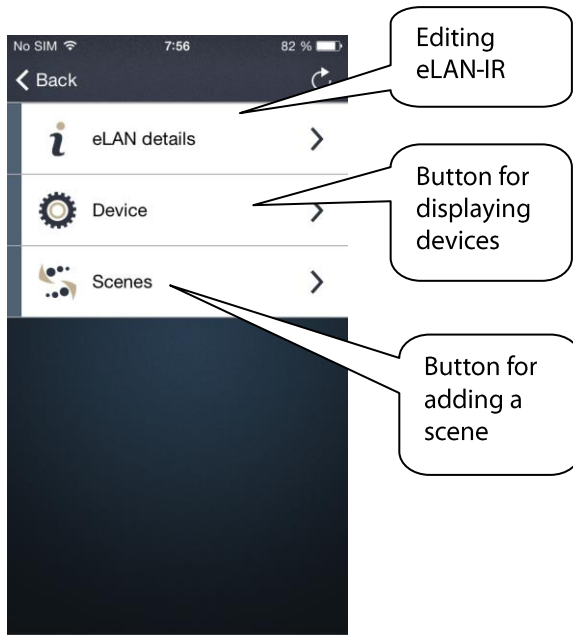
Deletion - by pressing DELETE, which appears by pulling from the right edge of the screen.

### 3.2 Adding a device

Press Devices to open the menu. After pressing + enter:

1. name of added device
2. model of device
3. type of device
4. manufacturer
5. description of device

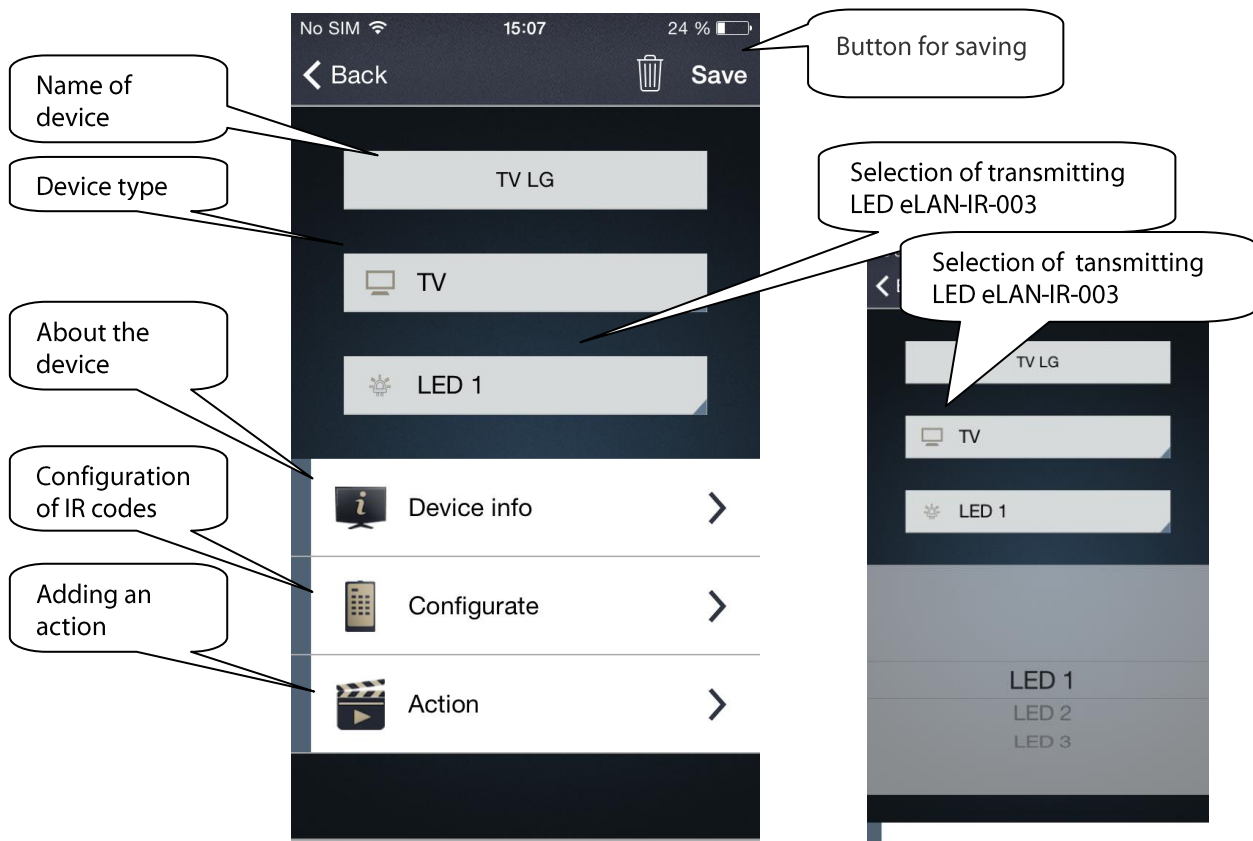
Confirm settings by pressing ✓ in the upper right corner.



### 3.3 Device configuration


By pressing the entered device, a menu opens for you to configure it.

1. Name – entered name of device, option of editing.
2. Type of device - option of editing.
3. Selection of LED indication (output) of Smart IR box eLAN-IR, from which a specific device will be controlled.
4. Information on the device that you entered when adding it.
5. Configure - option of adding IR codes from your controller to the memory of eLAN-IR-003.
6. Actions - used to add individual actions by which it is possible to send multiple IR codes at once for a single device (e.g. if you have a favorite program on channel 1, you create an action with sending the IR code 1 and 2).
7. Recording into the database - used to send the stored device settings in a public database (when adding a device, you can download devices stored here).






See point 5 – Configure:

By pressing the symbol , you will see displayed the controller graphics with predefined buttons to which you can assign individual buttons of your remote control.

When pressing a predefined button in the application, the notification is displayed *Please wait. / Awaiting signal*. On your controller, press the required button (your controller must be as close to the smart IR box as possible, ELAN-IR, with the infrared sensor pointing towards the reader LED **IR LEARN**). You can then continue assigning (pairing) another button.

When pairing buttons, you can switch between screens by pressing the icon of the given window with buttons (menu below) or swiping to the side. Confirm settings by pressing  in the upper right corner.

*Note:* If one of the buttons that you programmed does not work, you can reprogram it by the method mentioned above.



Button for storing configured IR codes


Switching between windows using buttons

After clicking on any button, the notification *Please wait* appears, meaning that your Smart IR box eLAN-IR is awaiting a signal from your remote control. (Once the eLAN-IR receives the signal, the notification disappears and you can continue pairing another button).


see point 6 – Action:

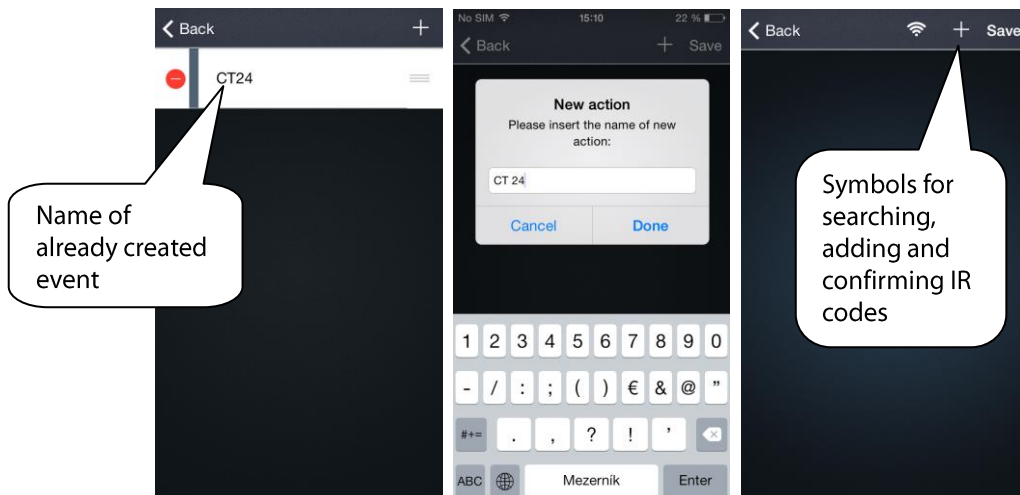
By pressing the symbol , a menu will display.

First name the entered action (e.g. favorite channel), confirm. Then add IR codes:

1. by pressing the search symbol and then the button on your remote control.
2. by pressing the symbol  and adding a command for a predefined button in the application.

Confirm settings by pressing  in the upper right corner.

Deletion - by the button .



Name of already created event

Symbols for searching, adding and confirming IR codes

### 3.4 Setting Scenes

By using the function *Scenes*, you can send several IR codes for multiple devices simultaneously, meaning that with a single press, you can switch on or off all programmed devices that you have controlled up until now with several different controllers.

The function *Scenes* is found in the Settings of the Smart IR box eLAN-IR-003 .

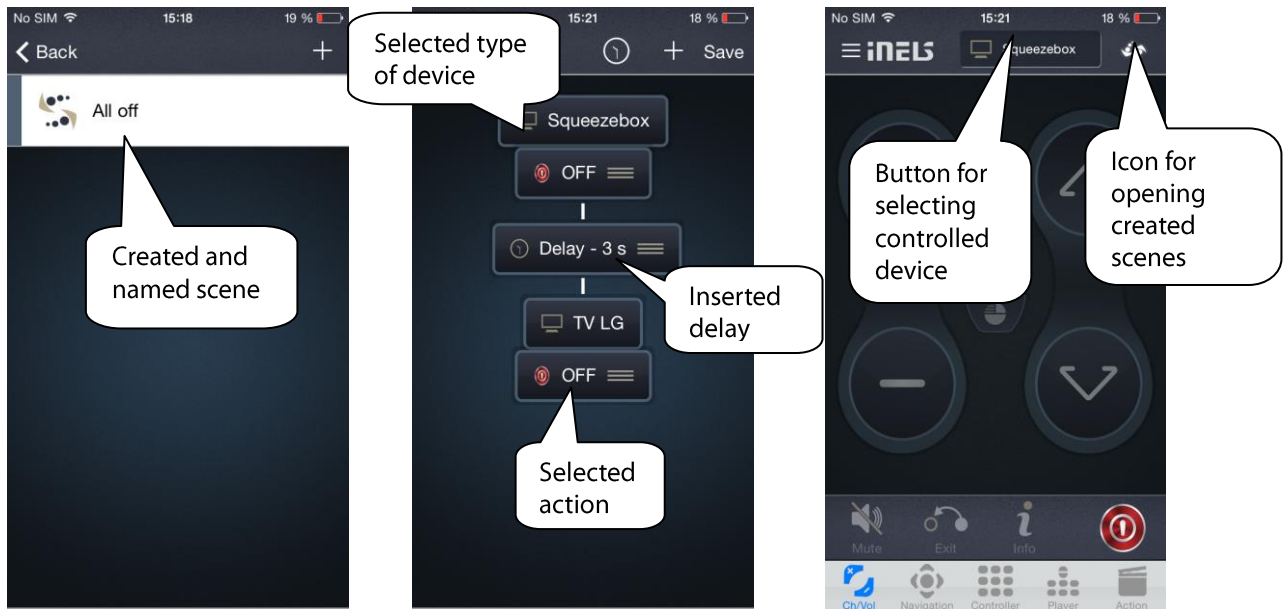
By pressing *Scenes* an empty window appears. Press the symbol + add scene, which you can name as you like. Highlight the devices you want to control. Press ✓ to save.

Open the stored scene by pressing and set the required actions for individual devices.

You can set a time delay between actions (within seconds). By pressing the clock symbol ⌚, you open the menu for setting the time delay. Press ✓ to save.

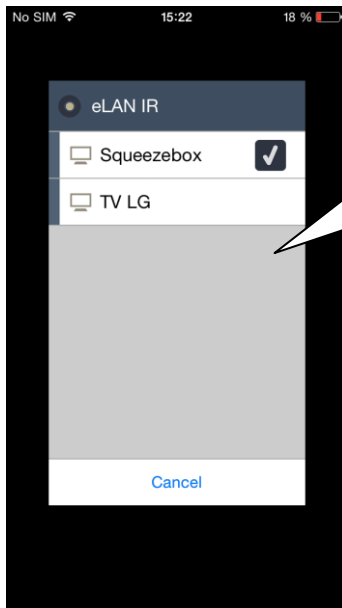
Deletion - by pressing DELETE, which appears by pulling from the right edge of the screen.

Open the created *Scenes* by pressing the icon on the main control panel.

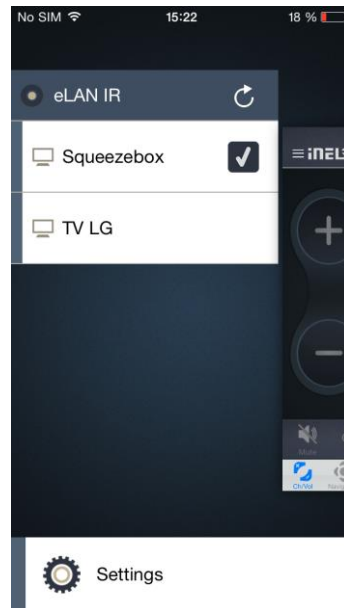


## 4. Control

1. You can select the device you want to control by pressing the button for changing the controlled device status.
2. Or by swiping to the side, the main control menu slides out and here you can select the controlled device.



Display when selecting the device by pressing on the device button.



Display of the device selection when slid out by swiping to the right.

Controller options menu in the application:

