

INSTALLATION MANUAL

for the Application iHC-MARF



▶ Google play
www.elkoep.com/apps

INEL

Contents

1. Introduction.....3
2. Installing the application on a smartphone with OS Android via the service Google Play3
3. Installing the application on a smartphone with OS Android4
4. Settings.....5
5. Control20

1. Introduction

The applications iHC-MARF (for mobile phones with OS Android) are designed for comfortable control of the RF Control electrical installation using your mobile telephone. This is an RF Control system accessory, and as a part of the iNELS Smart Home Solution, its elegance blends in with any modern home. The menu is divided into clearly structured sections in which the icons indicate individual functions. Here you will also find faster access to your favorite functions, and you will maintain a constant clear view of what's happening in and around your home.

Thanks to iHC-MARF (the "application"), you can perfectly control the function of your wireless RF Control electrical installation. You thus keep complete control over your home lights, appliance switching and heating.

The application only works with the device eLAN RF-003 or eLAN RF-Wi-003. This unit must be used in your wireless installation.

- It is designed for devices with OS Android 2.4 and higher.
- It is optimized for devices with a display resolution of 800x480
- The application language follows the language set in the OS Android

Implemented communication with Axis video cameras, thanks to which you can monitor what's going on around your home.

It also enables control for multiple users at once (by entering multiple IP addresses).

It enable creation of week-long programming or communicating with temperature units.

Downloading

Download the current version at Google Play (under the name iHC-MARF).

https://play.google.com/store/apps/details?id=cz.elkoep.ihc_marf&hl=en

Installing the application on a device

2. Installing the application on a smartphone with OS Android via the service Google Play

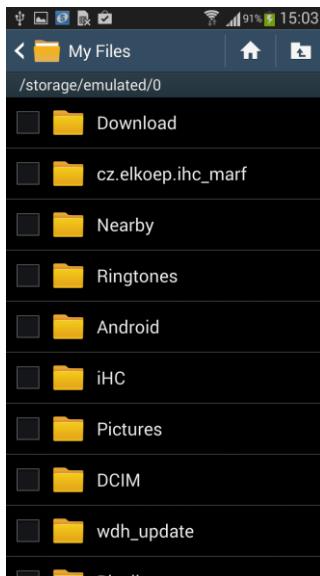


- Connect to the Internet using your mobile telephone.
- Activate the service Google Play.
- In the search bar, enter the password **iNELS** and press Search.
- Select the application **iNELS Home Control RF Mobile** from the list and open the dialog field with information on this application.
- Press the button **Install**. A message is displayed on permission to access the telephone services. These services are a condition for installing the application - press **Accept**.
- On the display, a downloading bar graph appears indicating that the application is downloading to the phone, followed by an installation notice.

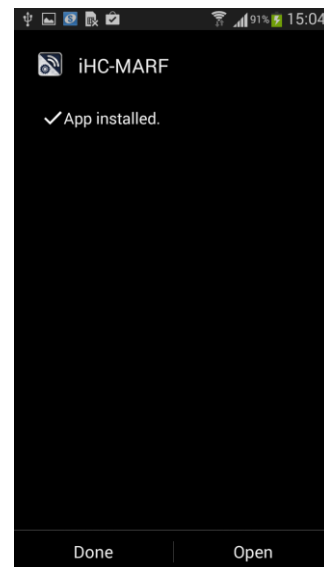
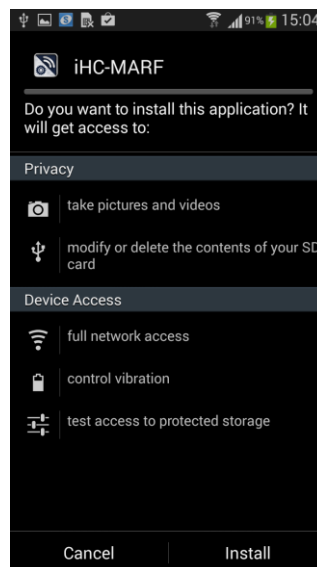


- g) After installing the application in the phone, the buttons **Open** and **Uninstall** appear.
- h) Press the tab in the icon **Application**.

3. Installing the application on a smartphone with OS Android



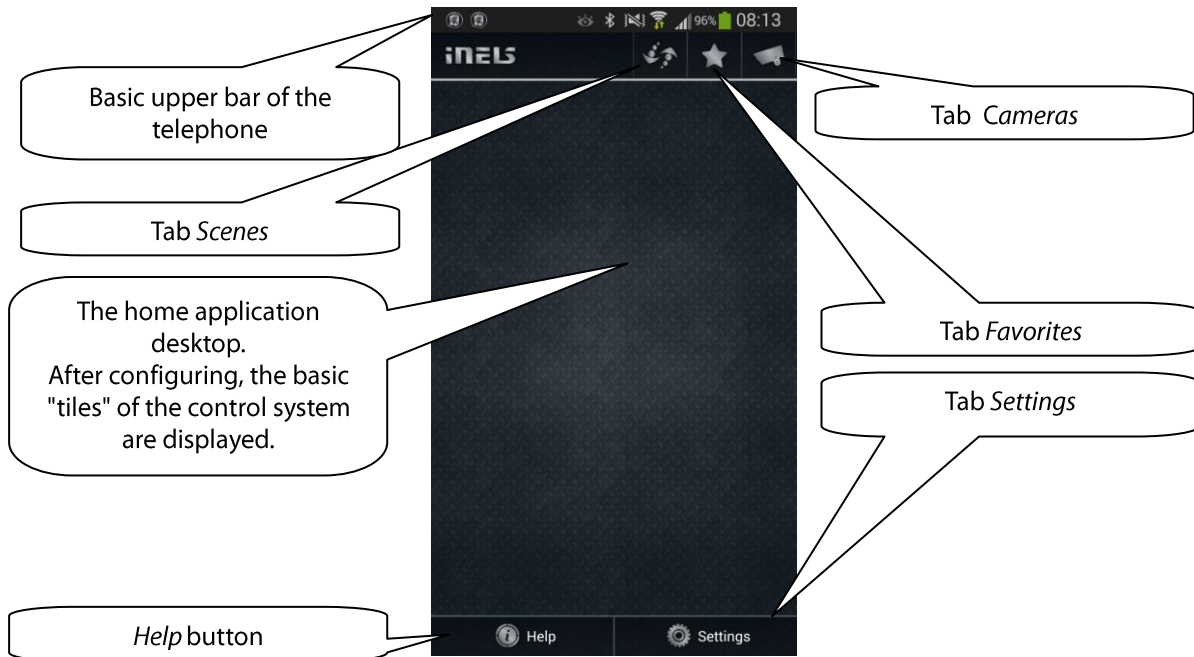
- a) You can also install the application in your smartphone from a file. The application can be downloaded to the PC or the telephone into the given file system.
- b) Using your smartphone and the tool **File manager**, search for the stored application iHC-MARF in the file system directory.
- c) Press the file with the application iHC-MARF.apk to start installing the application from file.
- d) The OS asks you for access to provided services needed for the application to run. Press the **Install** button to start the installation.
- e) After completing the installation, the OS informs you of successful completion of the installation. By pressing **Open**, you can verify the installed application iHC-MARF straight away.



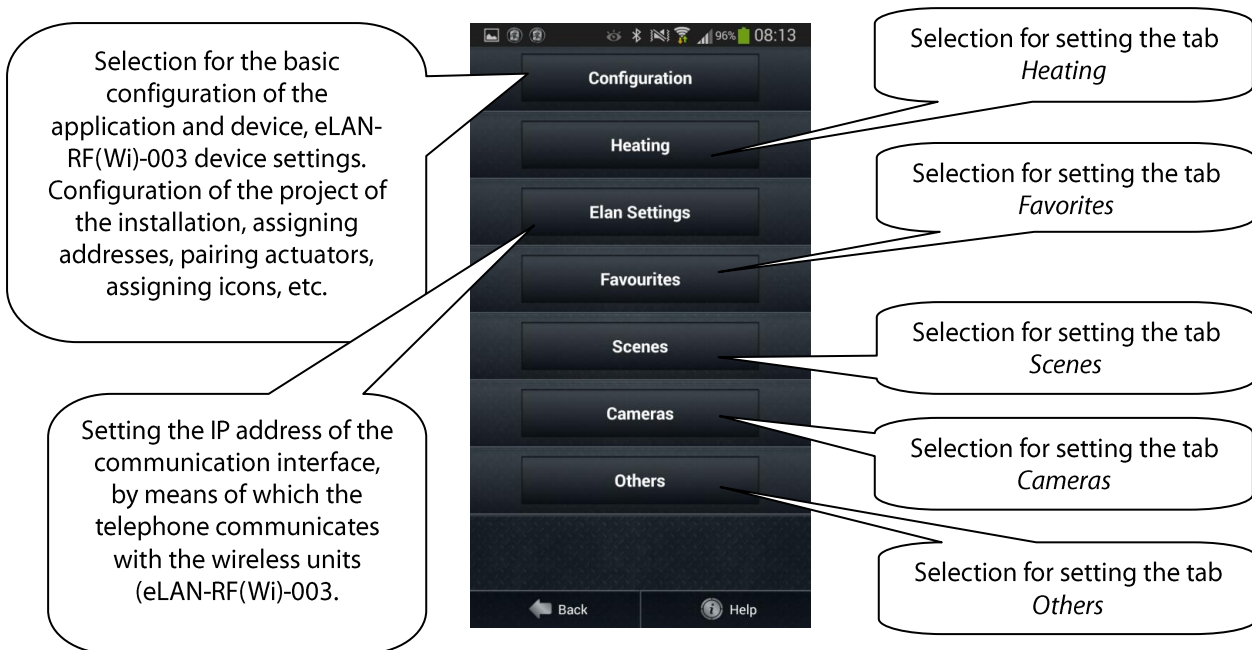
4. Settings

The application iHC-MARF is designed for controlling the installation so that once started, it immediately offers control over the electrical installation. To achieve this with as few presses as possible, you must first set up and configure the application.

Initial display upon running the application.

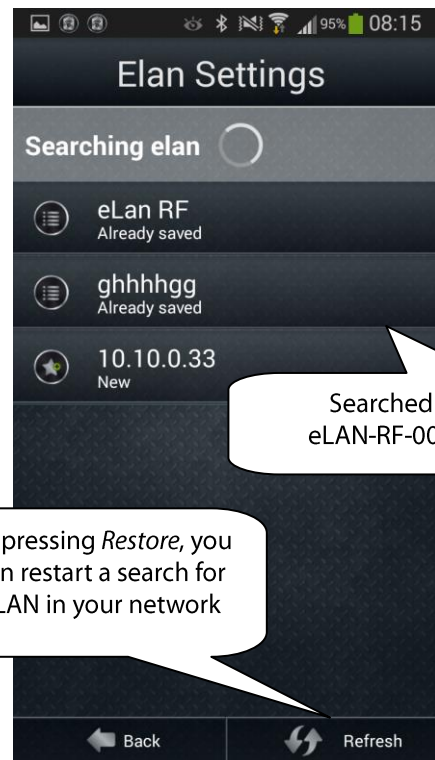
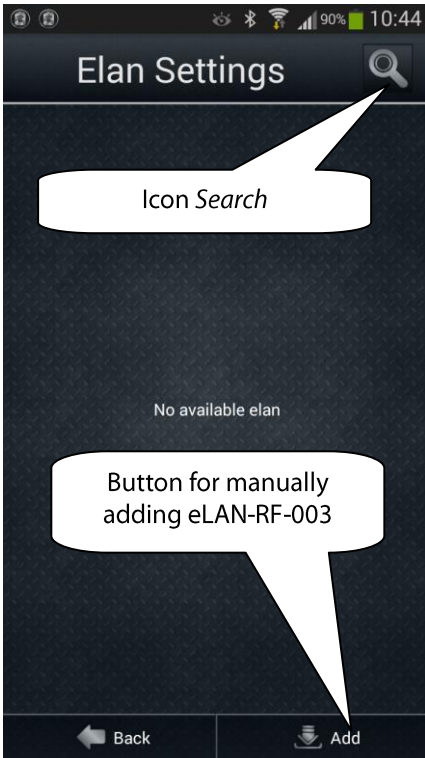


By pressing **Settings**, the basic application settings menu displays.

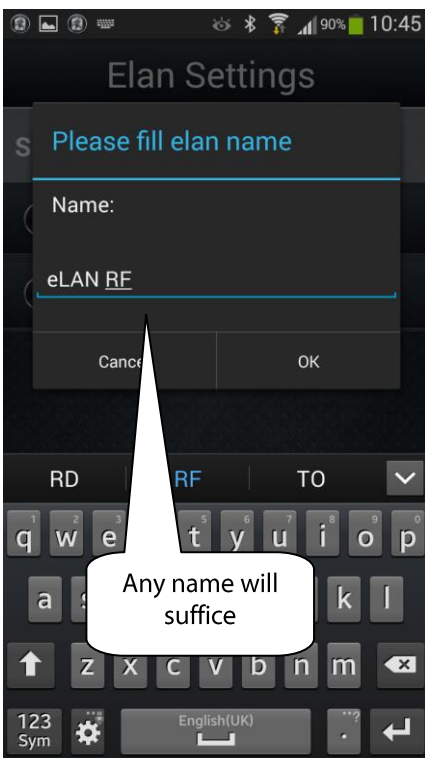


• **Tab - eLAN Settings**

- Manually adding eLAN: If you know the IP address eLN-RF-003 to which you want to connect, you can press the button **Add**. Enter its name (any name) and IP address.
- Automatic search: Press the icon **search**. Discovered eLAN-RF-003 units appear that are located in your network to which you are currently connected by phone (home network).



By pressing *Restore*, you can restart a search for eLAN in your network



By pressing the required eLAN, a window opens up for you to name it. After entering the name, confirm by pressing **OK** (if manually entering, the eLAN-RF-003 is named when added).

In this device list, you can have several eLAN devices and IP addresses configured. Here you can introduce one eLAN even with two IP addresses (with an internal IP address for the home network and a public IP address for remote communication).



For the application to run properly, you must highlight in the list the eLAN with which the application is to communicate primarily.

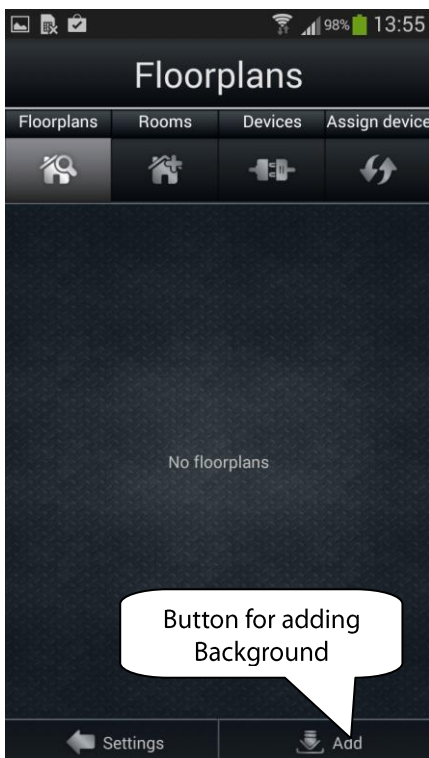
By pressing **Back**, you return to the settings menu

If you have already set up the eLAN-RF-003, click **Back** to go back to the desktop with set-up units.

If you are setting up the eLAN-RF-003 for the first time, continue setting it up according to the manual.

- **Tab - Configuration**

By pressing the tab **Configuration**, you will arrive at the basic settings menu.



- **Background**

After clicking on **Add**, you can add any image (floor plan) you like from your telephone to display it later in the application.

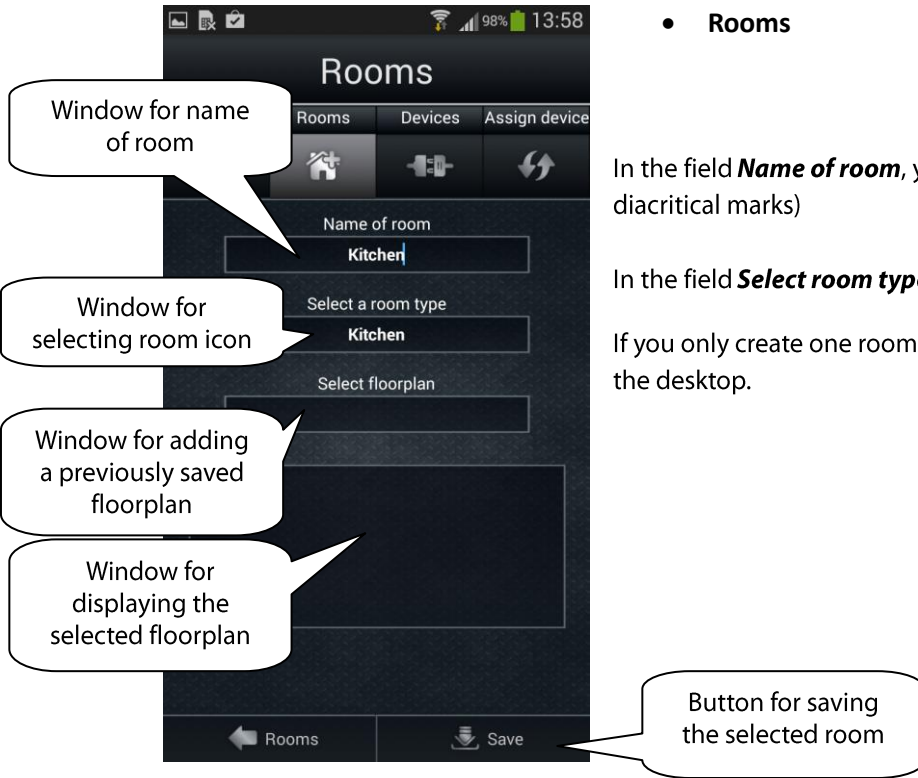
Even if the floor plan that you select won't display later in your smartphone application, it is needed for creating the room.

• **Rooms**

In the field **Name of room**, you can enter any name (even with diacritical marks)

In the field **Select room type**, choose the room icon.

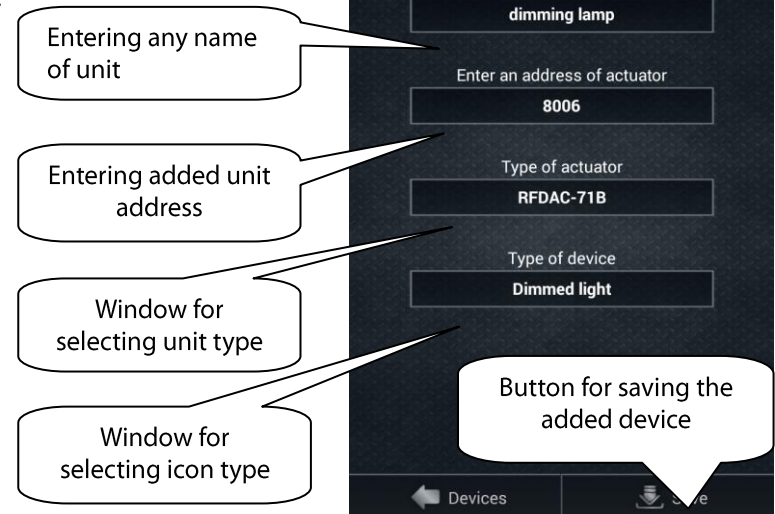
If you only create one room, the device is displayed directly on the desktop.



• **Units**

To add a unit that you want to control through the application, you must fill in the fields:

1. Name of unit - any name
2. Enter the unit address – the address is a six-digit code listed on the unit box.
3. Type of unit - select type of unit.
4. Select type of icon to be displayed.



Removing a unit – by a long press on the given unit.

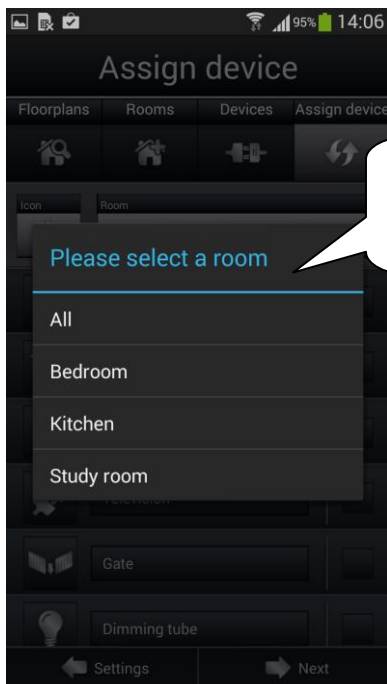
Modification / renaming – by a short press on the given unit, you will open the settings options

Added units

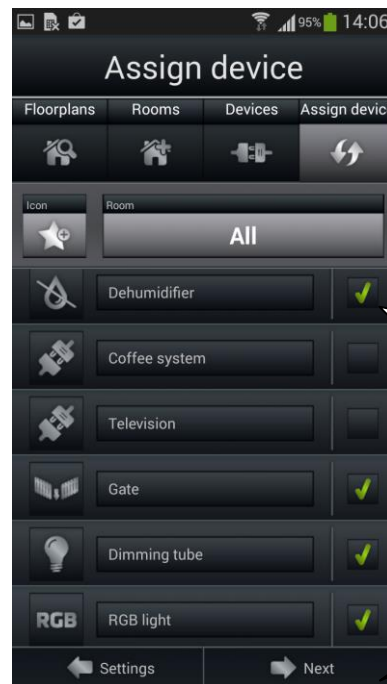


- **Add units**

After adding rooms and all required units, it is a good idea for a clearer picture to assign units to individual rooms, in which they are found (not a condition).



Selection of the room for adding units



Confirmation button upon selecting the unit

Next button for continuing and consequent saving

Select the room in the menu **Add units**. By pressing ✓, you assign the unit to the selected room.

By pressing **Next**, you can select the next option and continue assigning.

Upon a change in assigned units, continue the same way – by pressing ✓, you change the device selection status.

• **Tab - Heating**

You can control heating in the application from the central source to control e.g. of a RFATV-1 thermovalve mounted on a heater valve.

The first step is selecting the central heating source (if it is necessary to control it) e.g. switching on an electric boiler.

The next step is placing units for temperature control (heating units, switches, thermovalves) in the required space (room).

You can have units placed in the required room for temperature control even without controlling the central heating by the eLAN unit.

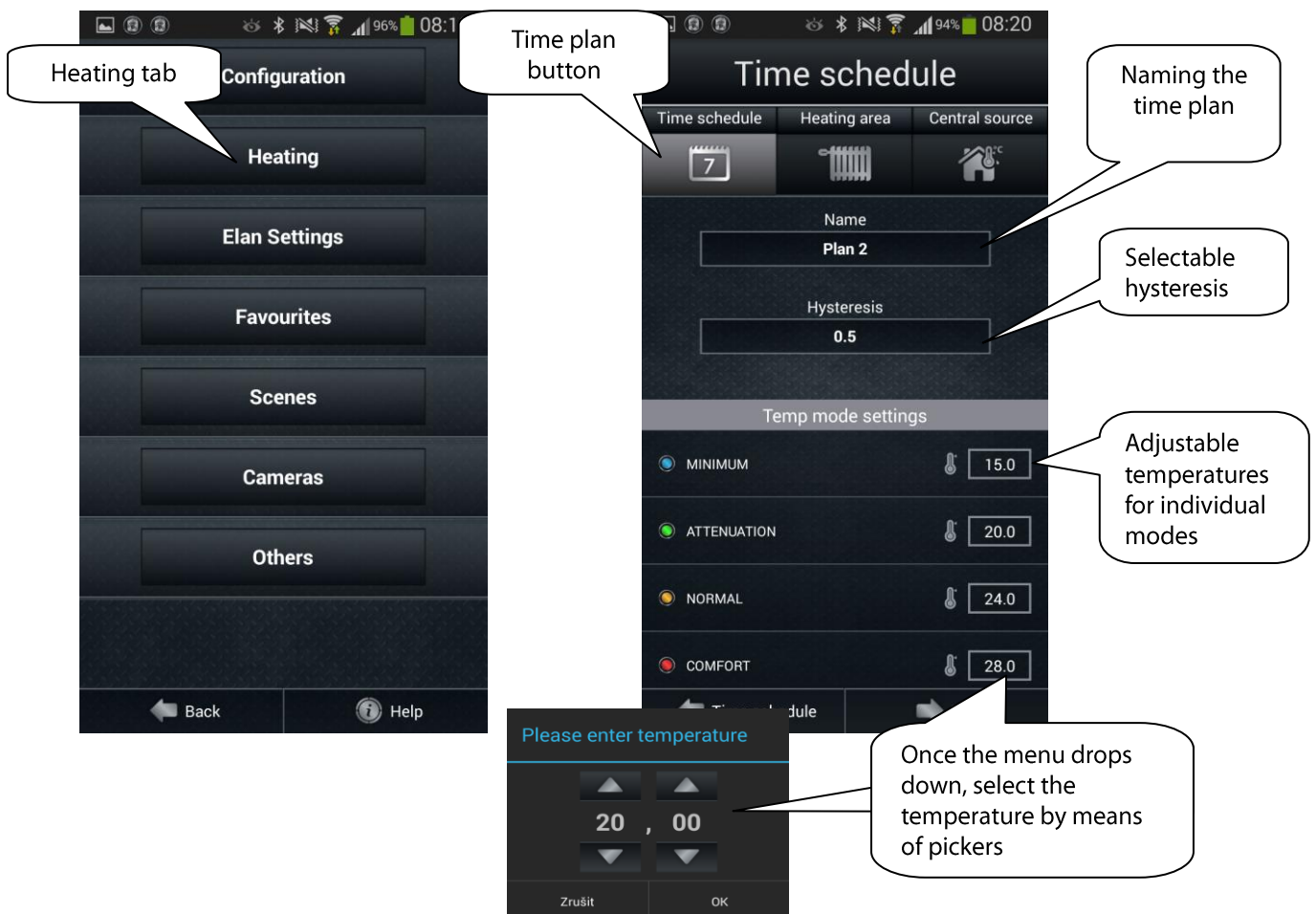
Assigning modes:

1. **Time plan** for heating, which you want to use.

In the field **Name**, enter the name of the heating program

In the field **Hysteresis**, select the required hysteresis in a range of 0.5-5°C.

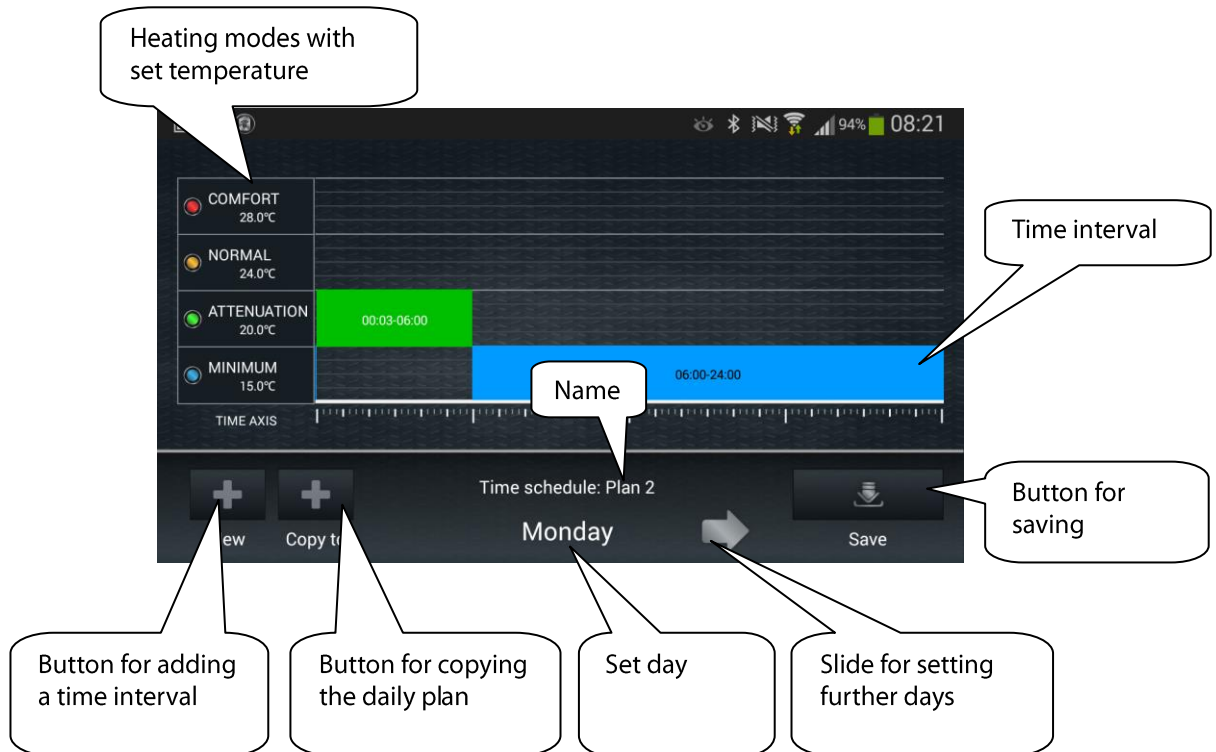
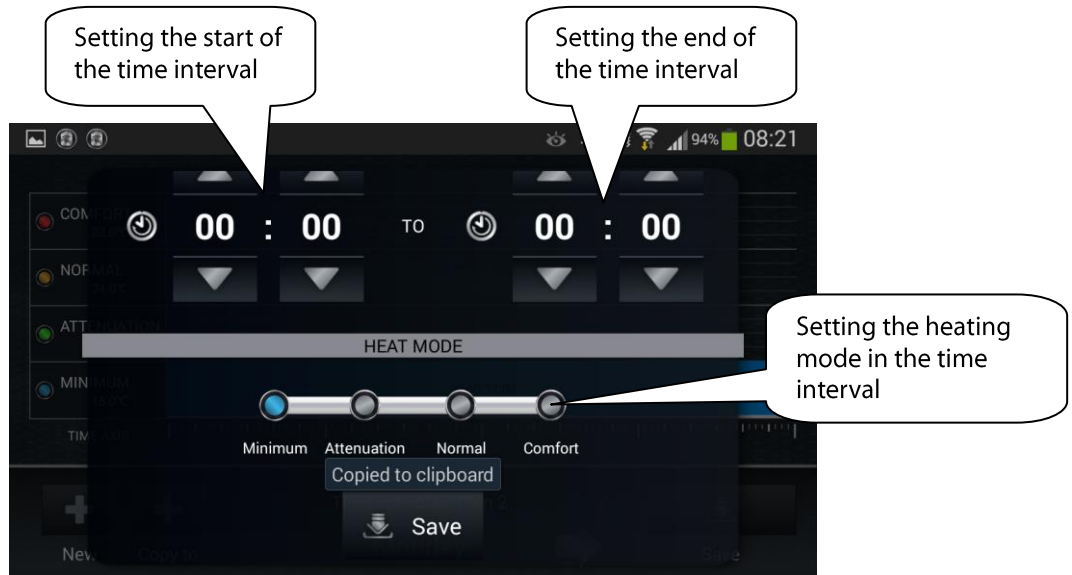
Setting heat modes - by pressing on the window beside the time modes, you can modify temperatures for individual rooms.



In the lower right corner, press **Next**.

- The graph appears, where you set the time plan of heating modes.

By default, the heating mode **Minimum** is set throughout the week throughout a 24-hour time axis. When creating a time plan, you will see displayed the heating mode for **Monday**. By pressing (+) **New**, you can set the time intervals (in hours and minutes) and select a heating mode for them. You can create up to 8 time intervals for a single day, which can be changed at any time during use.

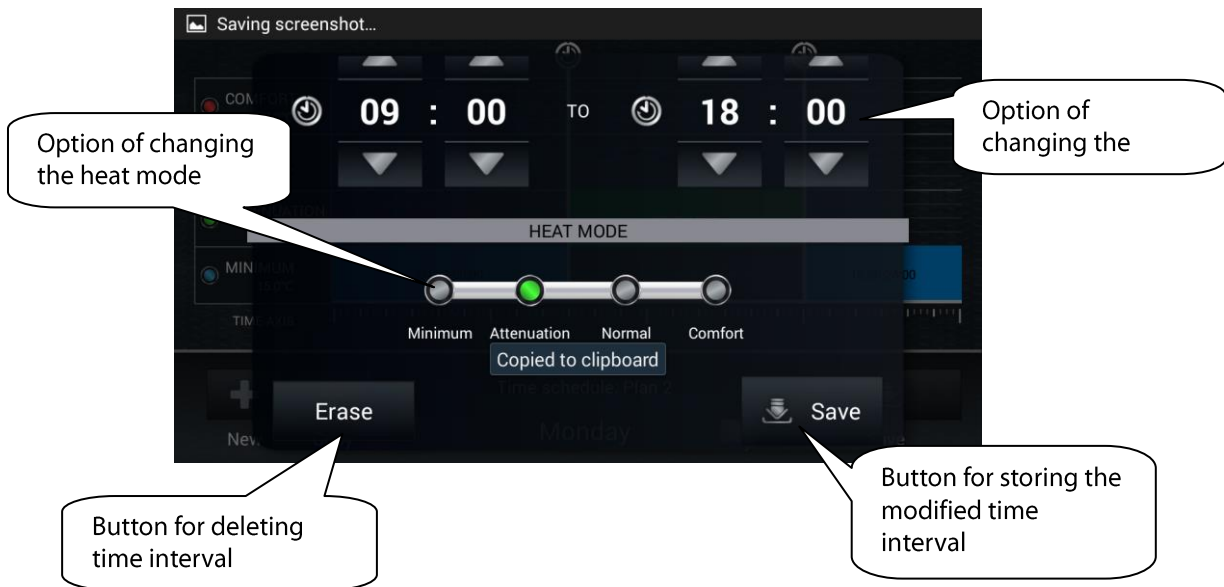


By pressing **(+) Copy to**, you can copy the set time schedule to other days. By pressing **All**, you will copy over the time schedule to all days of the week.

By pressing the button **Save**, you can save the settings.

- Modify / delete the time interval.

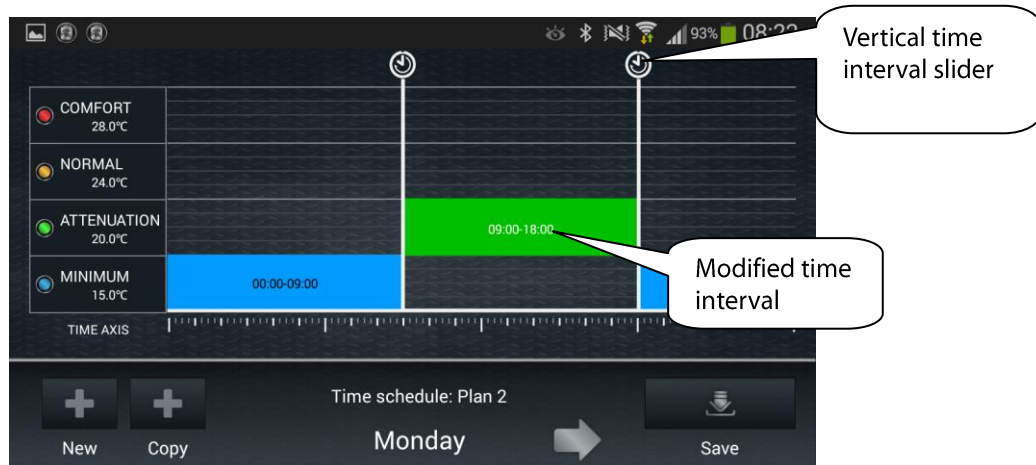
In the required time plan, press **Next**. By a long press right on the time interval, you open a table for modifying the time or deleting the interval.



Save the time interval modification by pressing **Save** and then confirming by pressing **Save settings**.

- Fast modification of time interval.

Shortly press the time interval, and it will set the sliders. You can modify the interval as needed by simply moving the sliders to the sides.



2. **Heating circuits** (heating rooms) to which you can assign time plans.

Press **Heating circuit**, and by pressing **Add** at the bottom right, you will create a new heating circuit.

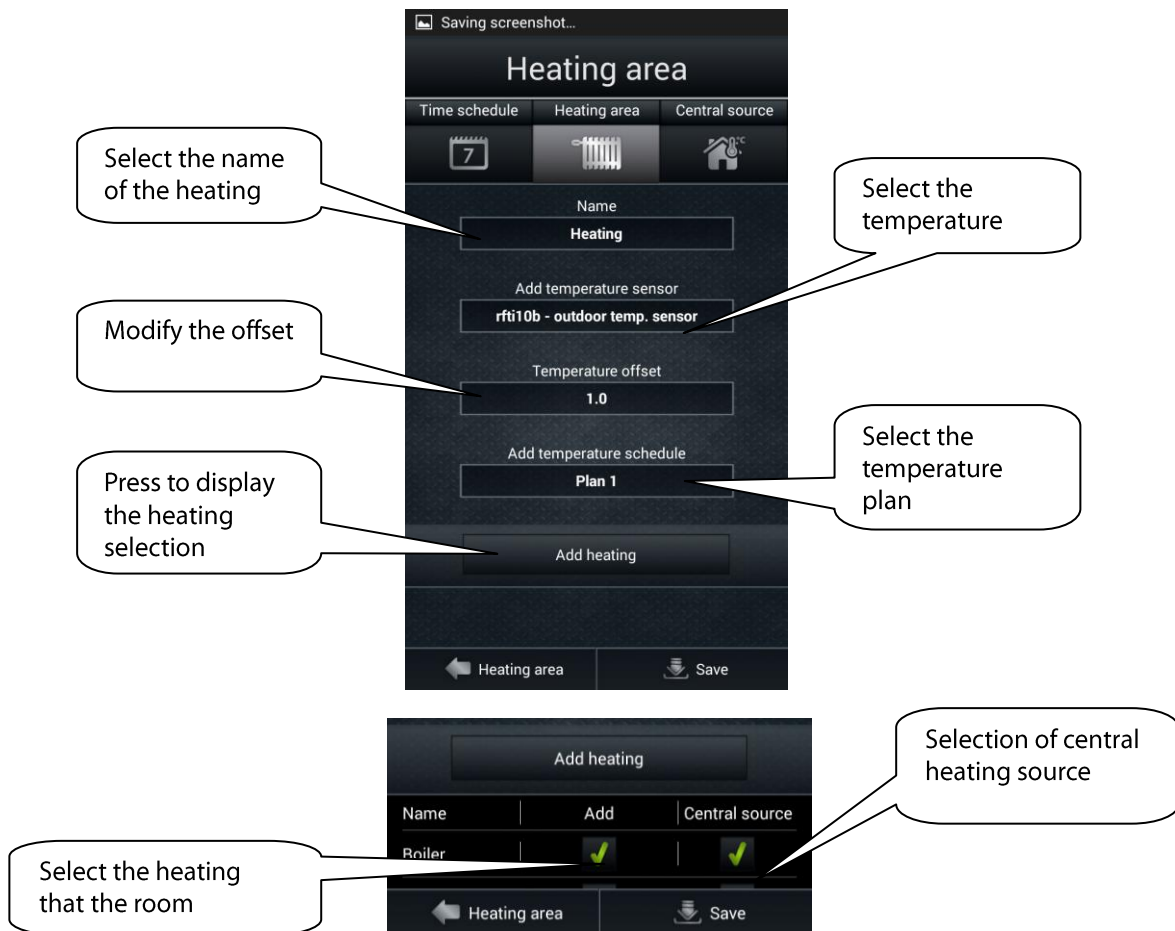
Name – enter the name of the heating circuit (e.g.: Room 1)

Select the temperature sensor - select the required unit with temperature sensor (e.g. RFATV-1). Some units have two temperature sensors - internal and external - selected the required one.

Temperature offset - set the offset (if the temperature from the thermovalve sensor differs from the true ambient temperature).

Select the temperature plan – from the set menu.

Select heating - here select the units found in the given area and those that you want to control heating of a room. If you have a controlled central heating source, you can assign it to the selected heating.



For easier control, we recommend creating a separate room for heating circuits, into which you will assign all heating circuits.

3. Central source

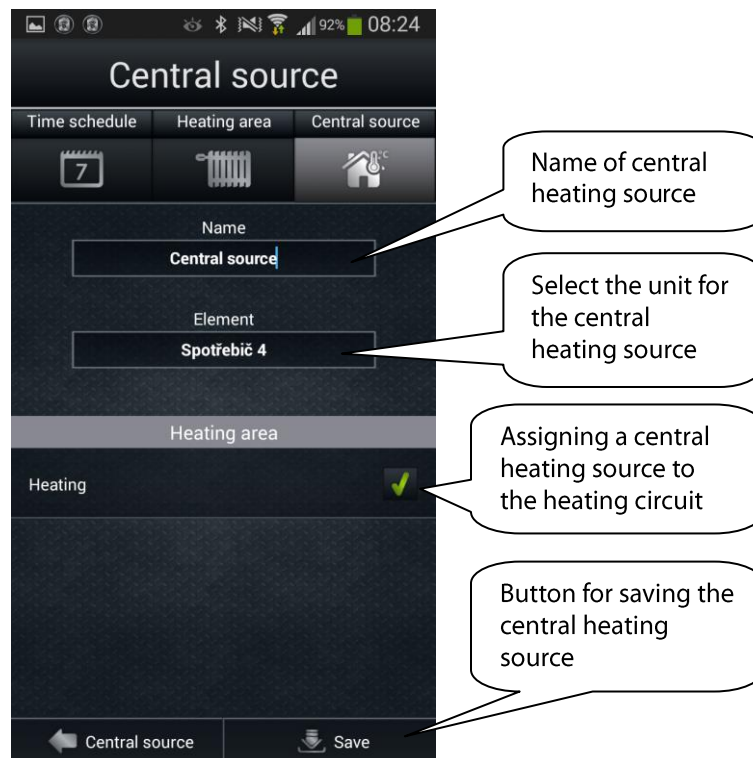
Press **Central source**, and by pressing **Add** at the bottom right, you will create a new central source.

Name – enter the name of the central heating source.

Unit – select the unit by which you switch on the central source.

Heating circuit – indicate the heating circuits that you want linked to the central source.

Save by pressing **Save**.



• **Tab - Favorites**

After pressing the tab, the application desktop appears with the buttons **Help** and **Add**.

By pressing **Add**, a list opens of configured devices, which you will designate with ✓. After pressing **Save**, it is assigned to the list in the **Favorites** tab.



• **Tab - Scenes**



The list of scenes is used to activate the user's predefined scenes, such as **all off**, **all on**, all blinds up, **all on** - all blinds down, etc.

After pressing the **Scenes** tab, press **Add**.

Name – enter the name of the light scene.

By designating ✓ you select the units you want to assign to the light scene.

When finished selecting, press **Next**.

Name the scene

Field for selecting from used units for configuration in the **Scenes** tab

The **Next** button for selecting units switches to the display for setting the functions of selected units.

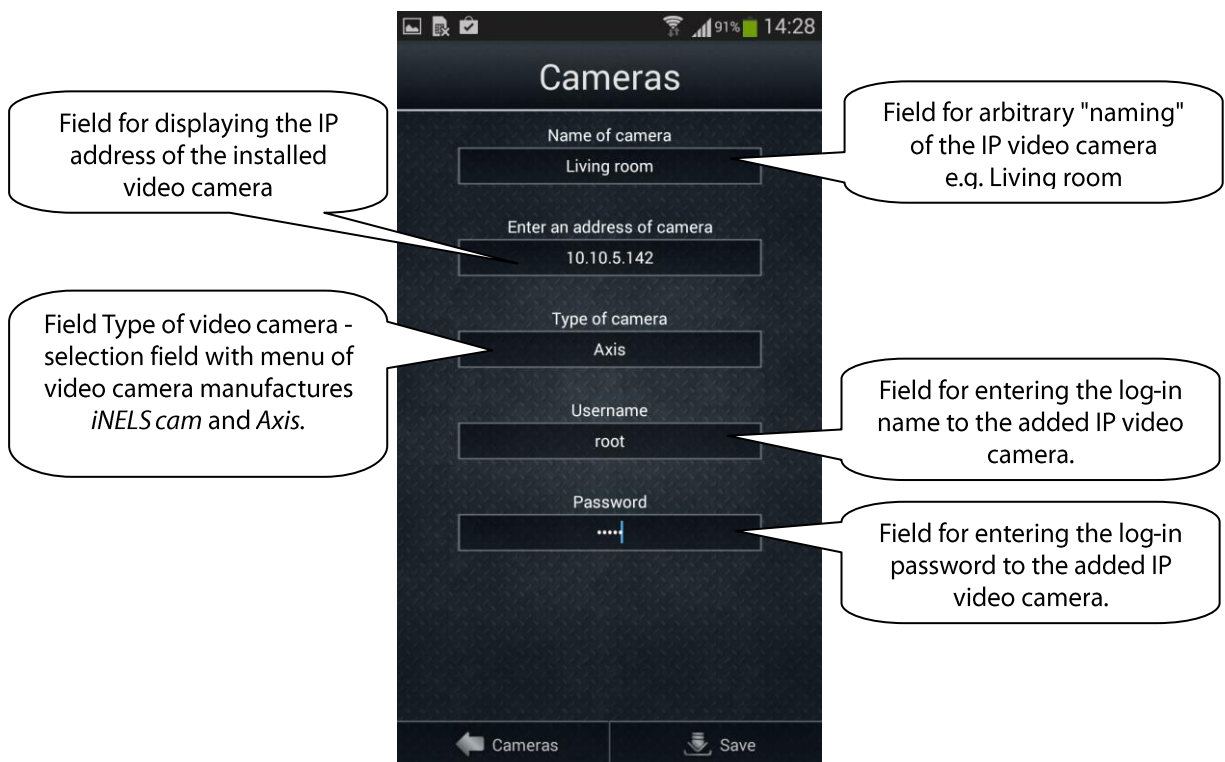
Select functions that you want the given scene to perform.



• **Tab - Cameras**

If you wish to have video cameras always "at hand", you can add them to the quick display - Tiles. In the iHC application, you can also view the current image (stream) from home security Axis IP video cameras.

By pressing **Add**, you will open the menu with settings to Axis IP video cameras.



Note: When using other than the recommended IP cameras, format of stream requires mjpg. Please insert this format in the column "Enter an address of camera". To access your stream please use e.g. web interface or check in the camera manual. If the stream is not in a format MJPG, the App connection attempt will fail.

Example:

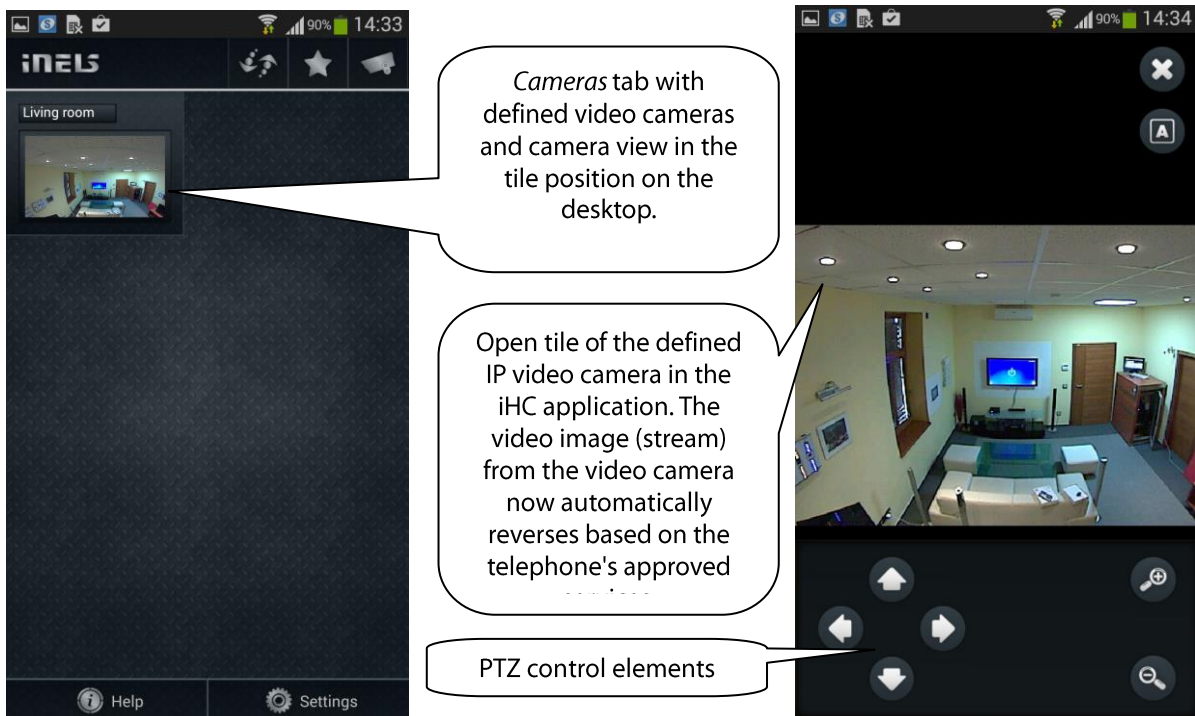
Address format: [ip address:port/mjpg/video.mjpg](#)

Address format example: [10.10.5.142:80/mjpg/video.mjpg](#)

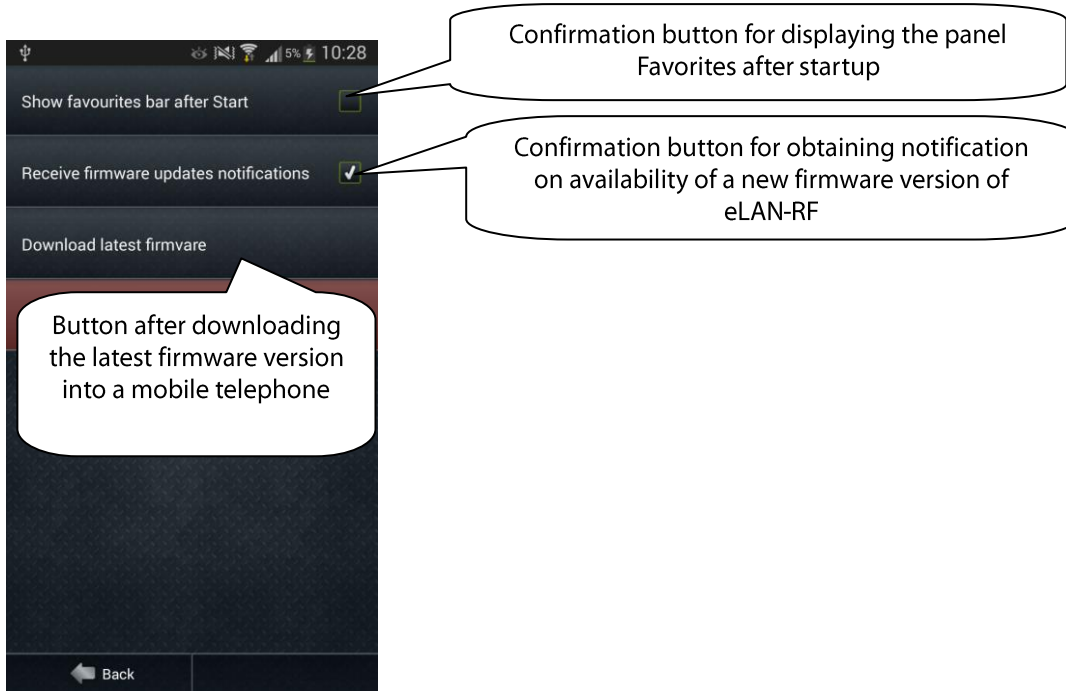
After filling in items on the display, press **Save**. The application saves the settings and automatically adds the video camera to the list of devices in the **Cameras** tab.

Removing a video camera from the list – by a long press on the given item in the list.

The application allows full screen video camera display; press and hold the relevant video camera view to open the PTZ panel to control it.



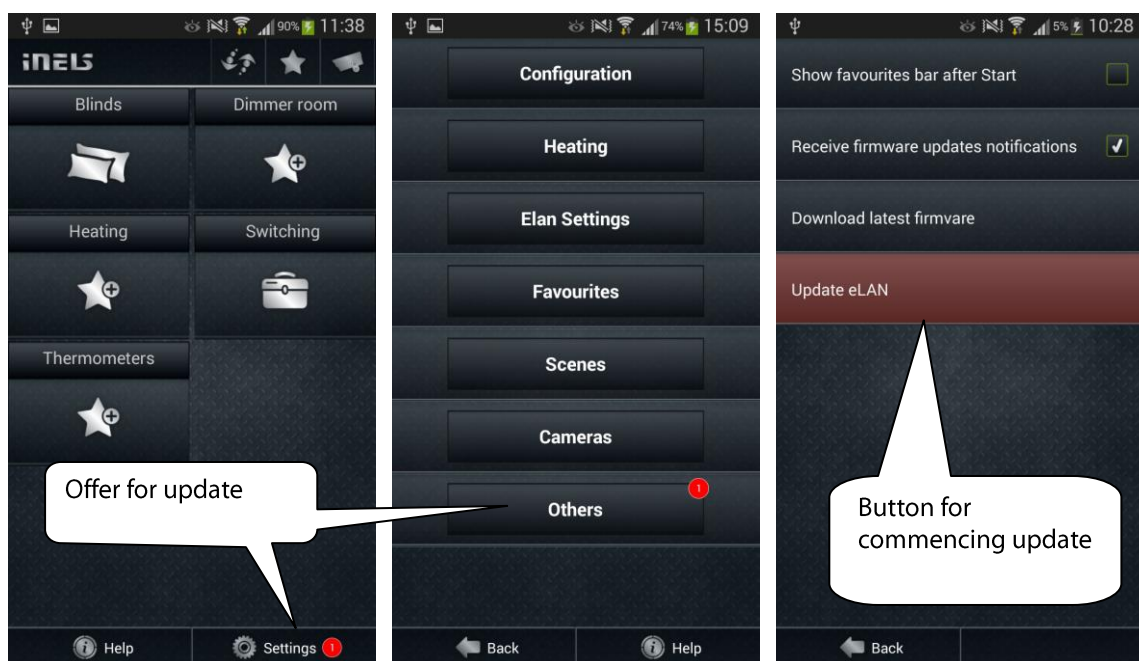
• **Tab - Other**



1. In the selection field **Display panel Favorite items after startup**, set the list of favorite items on the start page after starting the application.
2. In the selection field **Receive notifications on new firmware** - set automatic checking of availability of the newest version of firmware for your eLAN-RF, and you will receive notifications to your mobile phone.

After receiving notification, the application will ask you to update in the form of a red circle with an exclamation point. Pressing the button with the update offer will lead you to the menu **Other**. By pressing **Update eLAN**, the firmware in your eLAN-RF will be automatically updated.

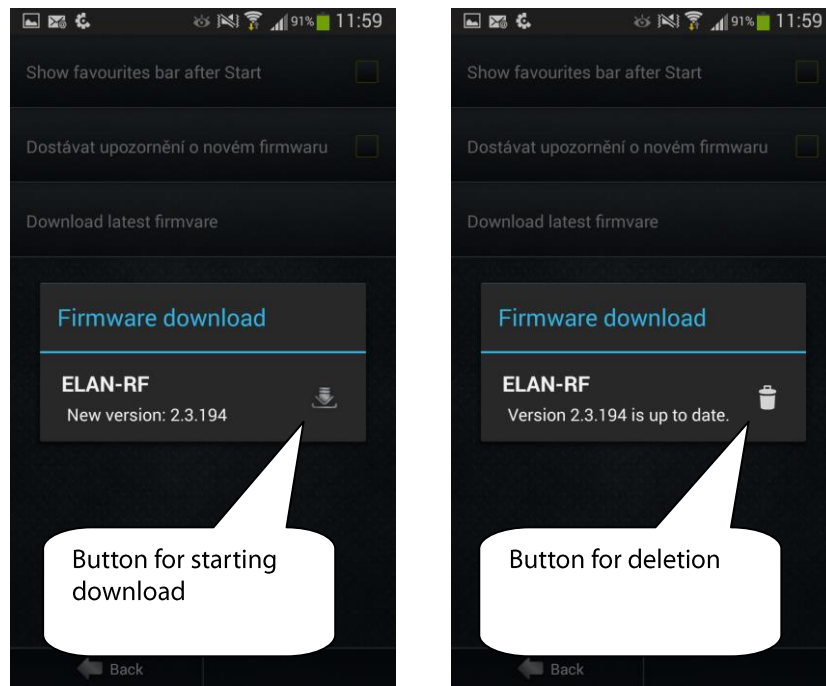
After using the function **Receive notifications on new firmware**, you must have an Internet connection via Wi-Fi network or mobile data.



- Item **Download newest firmware version** is used to download the latest firmware version into your mobile telephone. In case you already have the current firmware installed in your mobile phone, it offers you the option to delete it. To use the function **Receive notifications on new firmware**, you must have an Internet connection via Wi-Fi network or mobile data.

After connecting your telephone to the eLAN-RF device, you can press **Update eLAN** (in the menu Other), update firmware in eLAN-RF.

Thanks to this, you have the option of updating the firmware in the device eLAN-RF-003 even in places where an Internet connection is not available.



5. Control

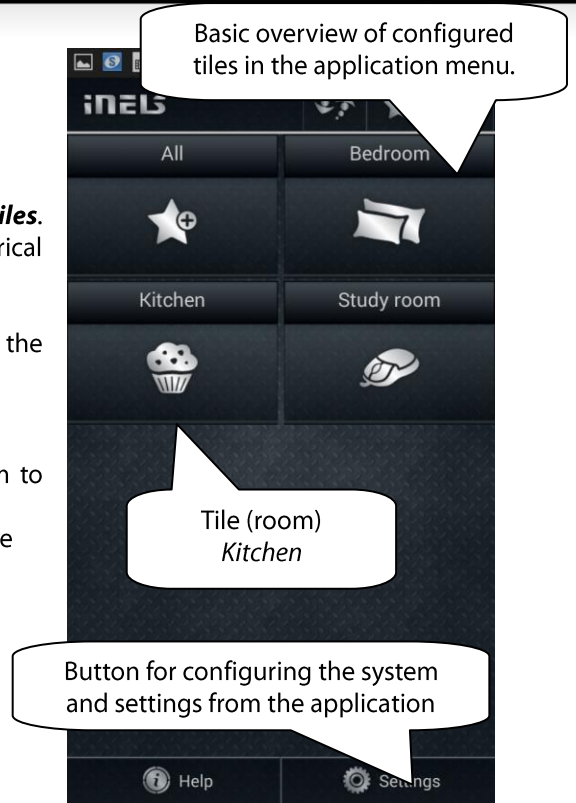
The main display in the iHC application is formed of so-called **Tiles**. This is a general overview of rooms in the intelligent electrical installation iNELS Home Control.

Based on the previous steps for settings, the initial tiles of the application will appear on the screen:

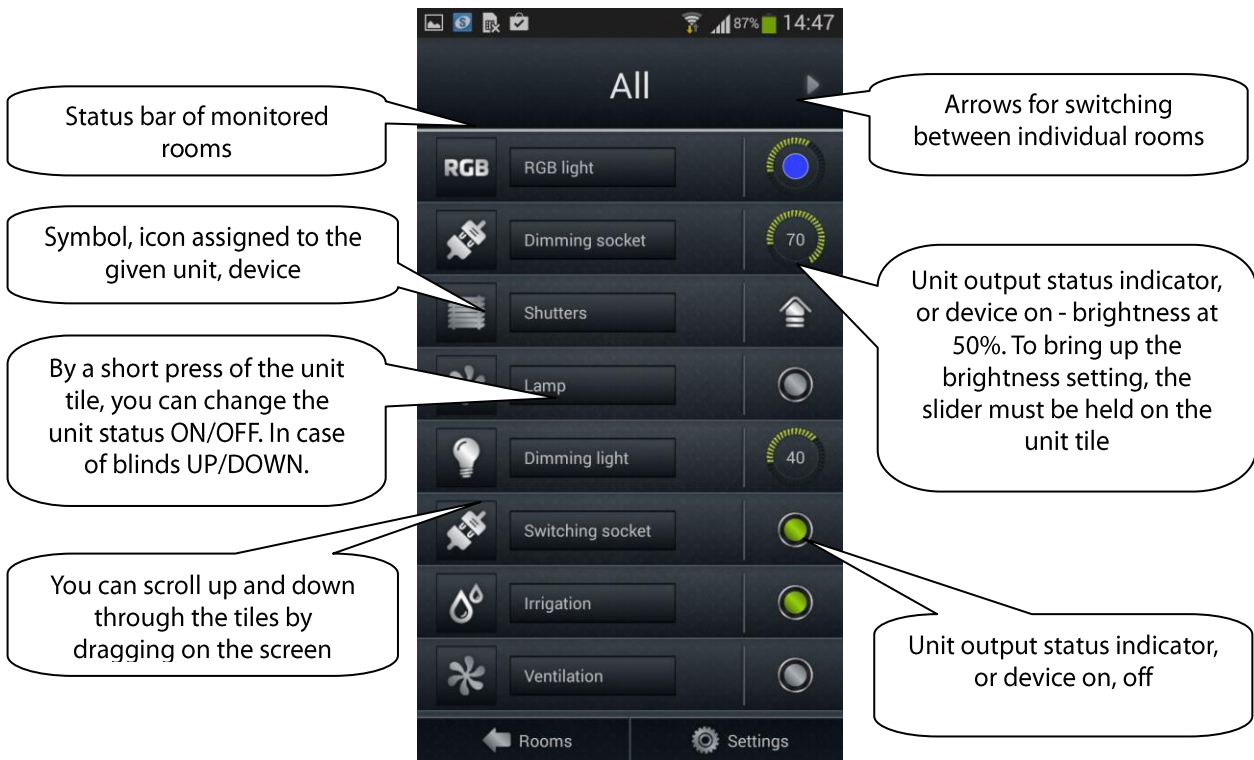
- based on units in rooms (e.g. "rooms as in living room")
- based on groups (e.g. "Lights or All").

If you want to control individual units, press the required room to which you have assigned the given unit.

If the configuration is set up that there are more than 6 tiles on the default display, switch between them by dragging your finger up/down along the display, i.e. scrolling.

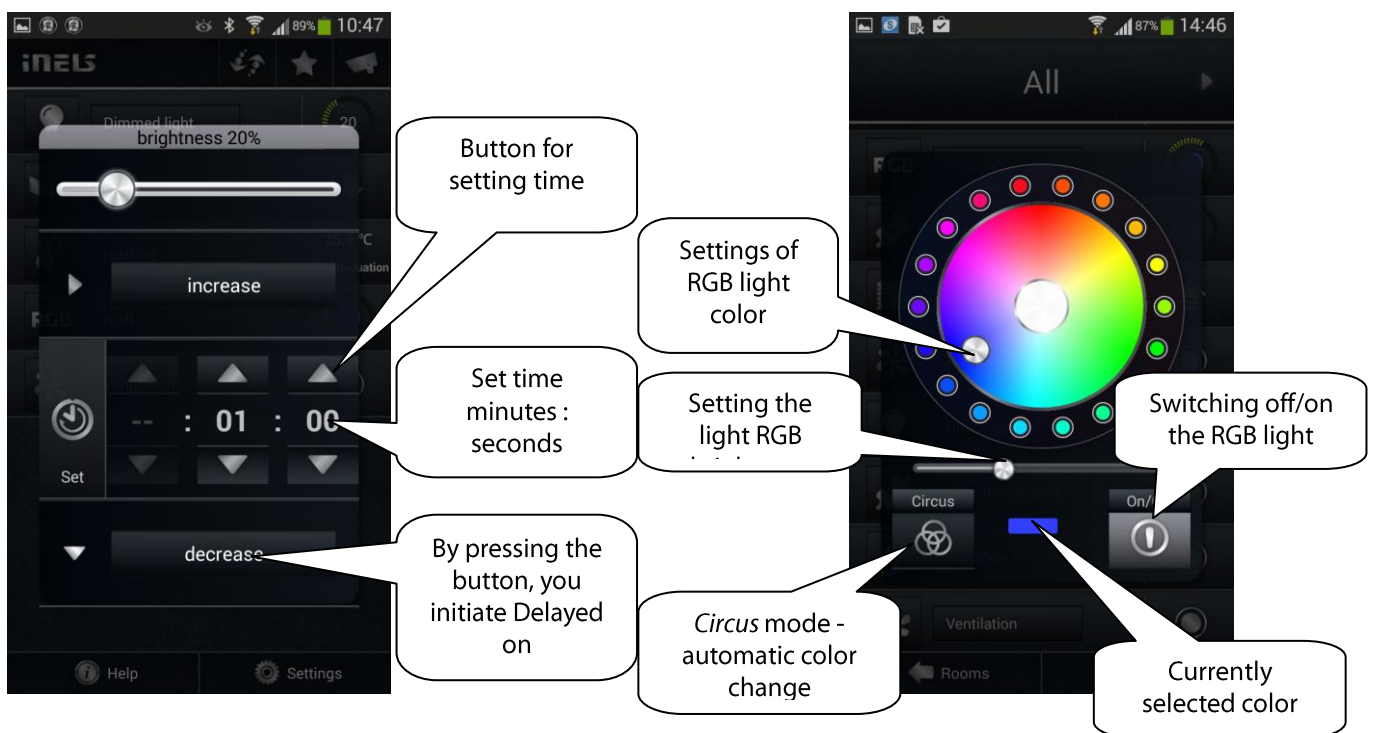
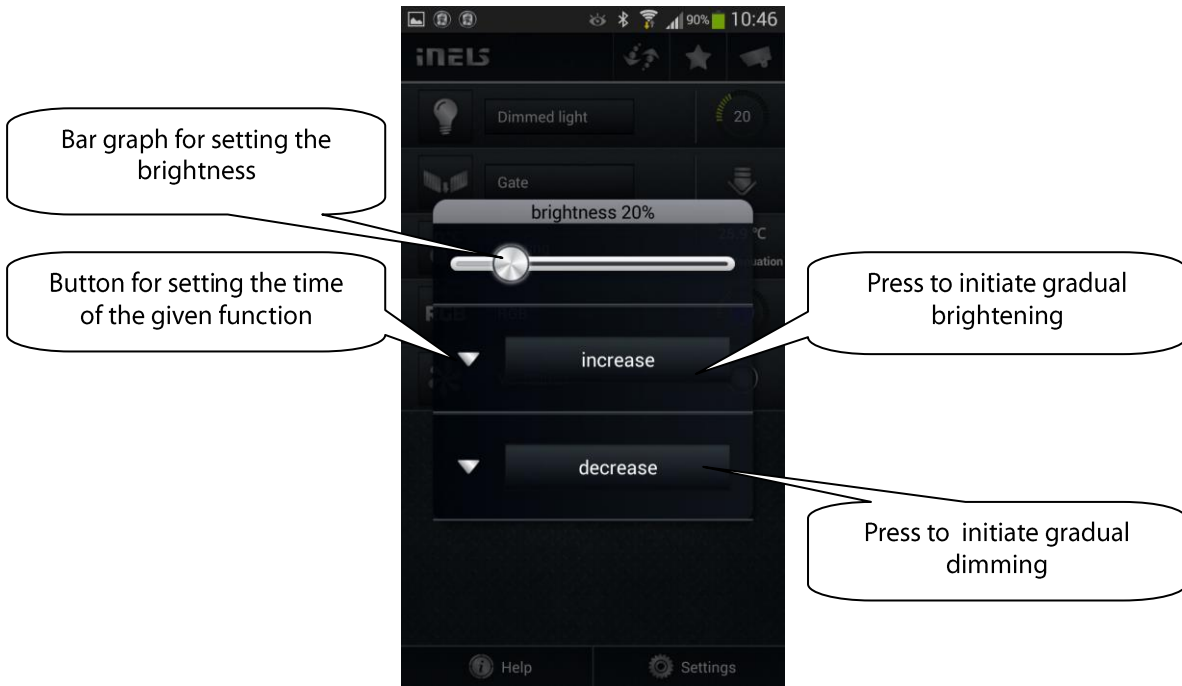


After displaying the list of units in a certain room, you can control individual devices.

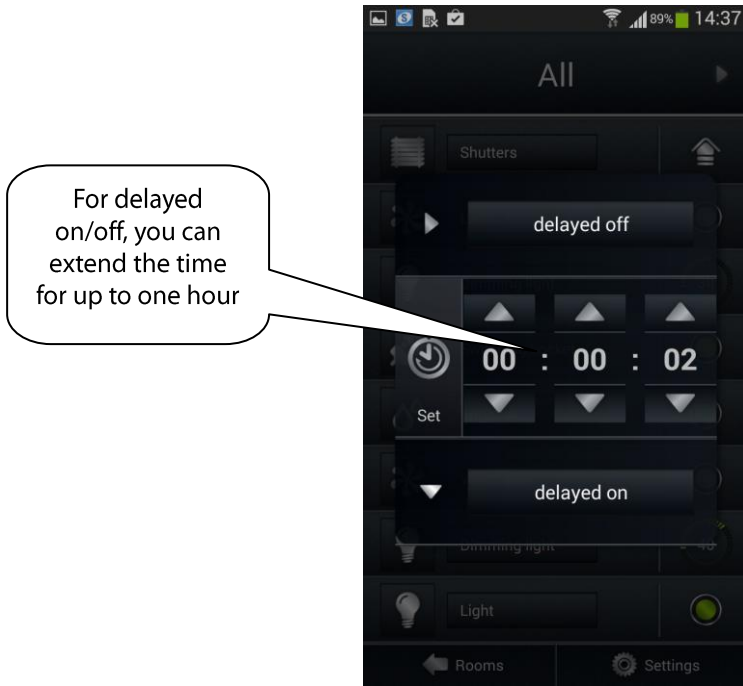


Controlling dimmers and switches

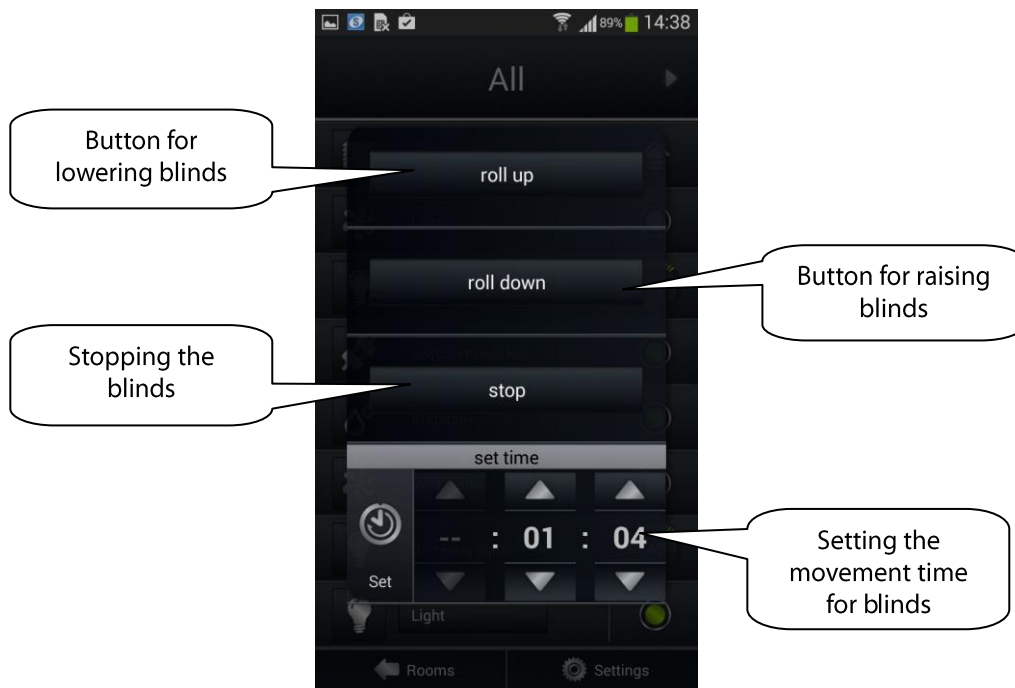
If you hold your finger down on the device, you will see displayed e.g. for a dimmed light, a bar graph for setting the dimmed light brightness. Two buttons are displayed underneath it - **increase** and **decrease**, enabling smooth dimming and brightening of the light. For the buttons **increase** and **decrease**, by pressing the arrows, a menu opens with options for setting the time of the increase / decrease functions. By pressing a dimmer with RGB control option, you will see the menu displayed for setting color, brightness and the brightening mode.



For switches, you can run the function **Delayed on / Delayed off**. The delayed on / off time settings are set by pressing arrows by the buttons.



For switches for controlling blinds, the movement time of the blinds is set in the same manner as for previous ones. Setting the time applies to both directions.

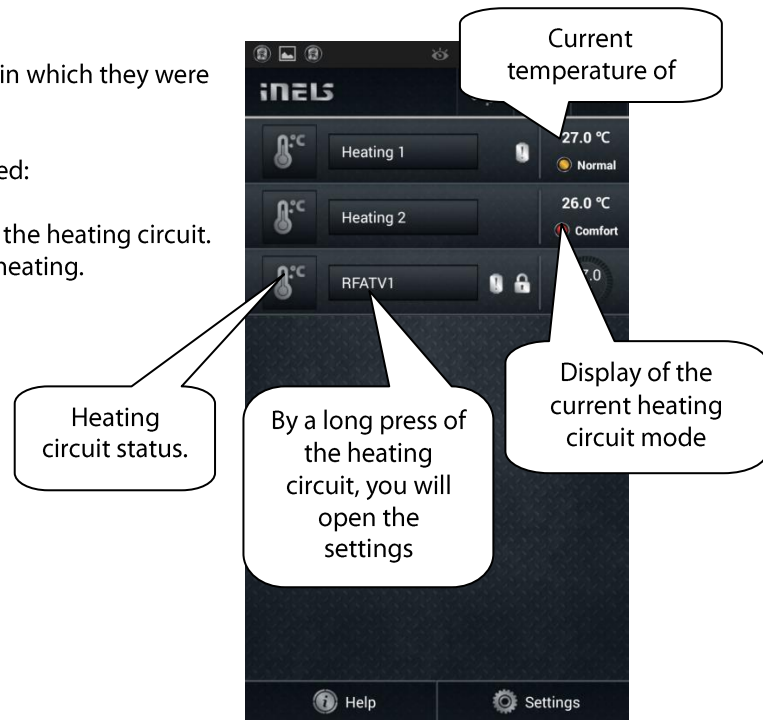


Controlling the temperature control

Heating circuits can be controlled right from the rooms in which they were assigned.

For heating circuits in the room, the following is displayed:

1. Current heating mode to the given heating circuit.
2. Current temperature of sensor at the unit assigned to the heating circuit.
3. Heating circuit status – backlit icon – circuit is active, heating.

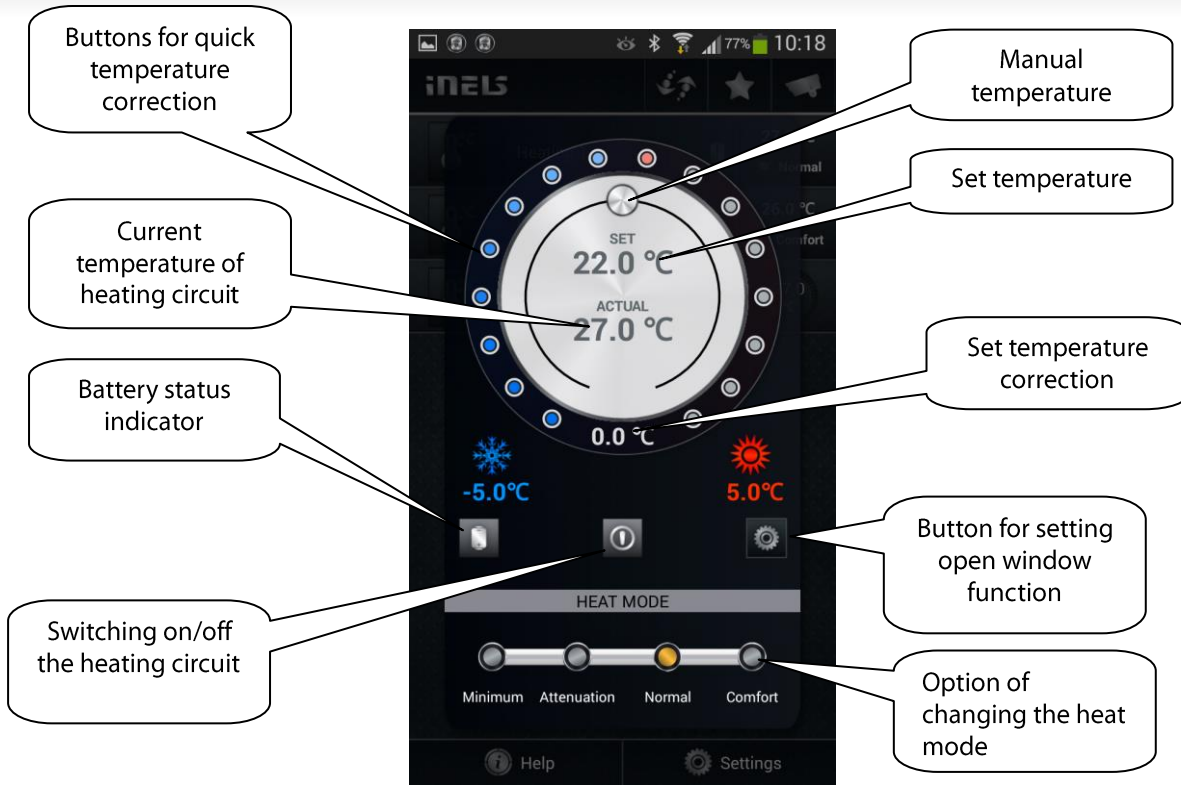


Heating circuit functions

The heating circuit monitors the temperature by means of a selected sensor in the room. Once the temperature drops below the set level +/- of the hysteresis, the units in the room determined for heating begin to heat, (the thermo valve opens on the heater valve, the relay at the heater switches on, etc.)


Change of heating mode in the circuit – by a long press, you will open the required circuit, and based on the current requirement, you can:

1. change the heating mode
2. manually adjust the temperature 0.5 - 5°C
3. switch on/off the entire circuit (regardless of its time plan)
4. set the function - sensitivity to an open window
5. inform on battery status
6. inform on current and set temperature




After manual adjustment of the heating mode, the heating circuit in the following set time interval returns, and will continue to work according to the set time plan

You can manually adjust the temperature at any time by +/- 5°C, the corrected temperature is only for the current time interval.

By pressing , you switch on/off the entire heating circuit regardless of its time plan.

By pressing the button for setting the function **window sensitivity**, you can set the sensitivity and time of switching off the heating while the window is open. Here you will find information on the current status of the function.

If the heating circuit contains units that are battery powered and the application ascertains that one of the units has a weak or dead battery, the left part of the screen displays the battery icon . By pressing the battery icon, a list is displayed of units needing a change of batteries. Another method of displaying a dead battery is indicated directly on the main screen at specific units, (rooms). The icon is only informative.

In the correction wheel, the Set and Current temperatures are displayed.
Set temperature - set in the heating mode +/- temperature correction adjusted by user.
Current temperature – measured by temperature sensor of one of the connected units.



If an icon appears at one of the units in the form of a lock, this means that the unit is already assigned into some heating circuit.

The unit cannot be controlled where, by an accidental press, you did not switch on heating that you have set in a different preselected time plan.

